

Supplies for Inorganic Analysis



LECO
EMPOWERING RESULTS

This page intentionally blank.

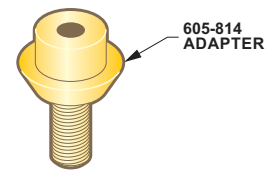
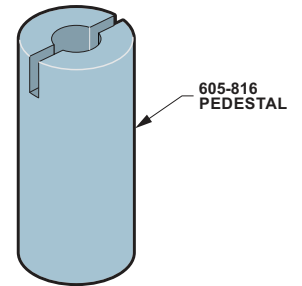
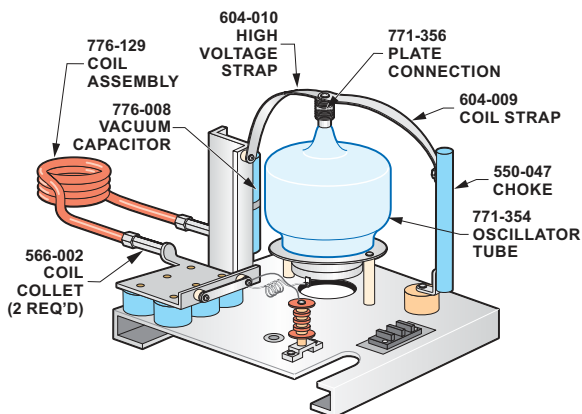
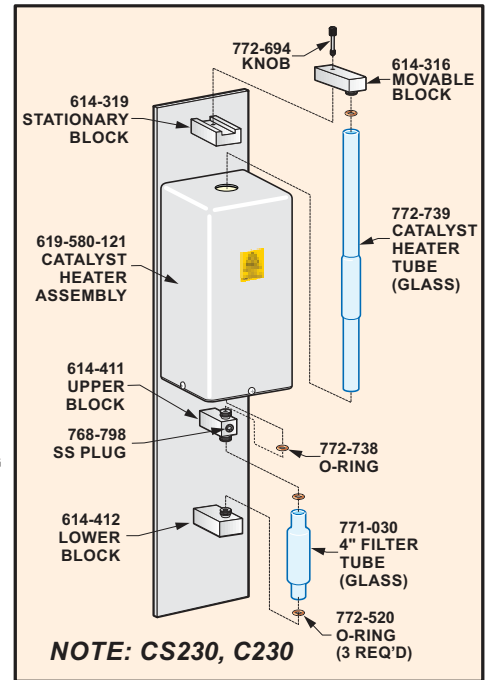
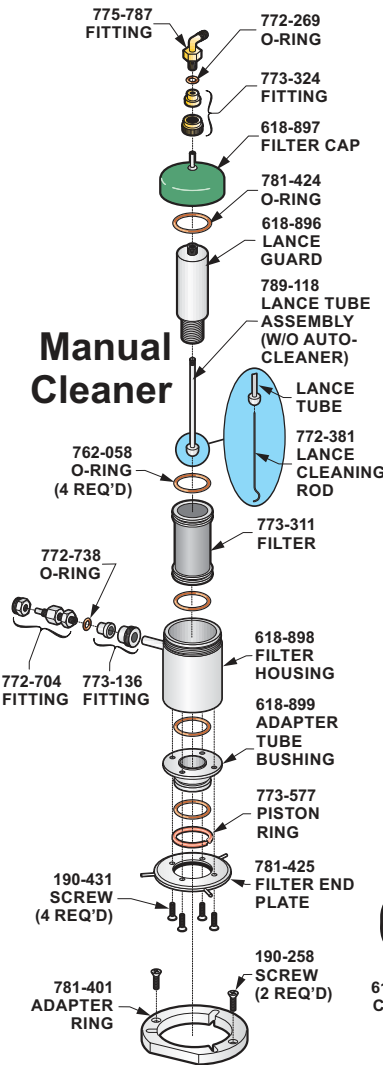
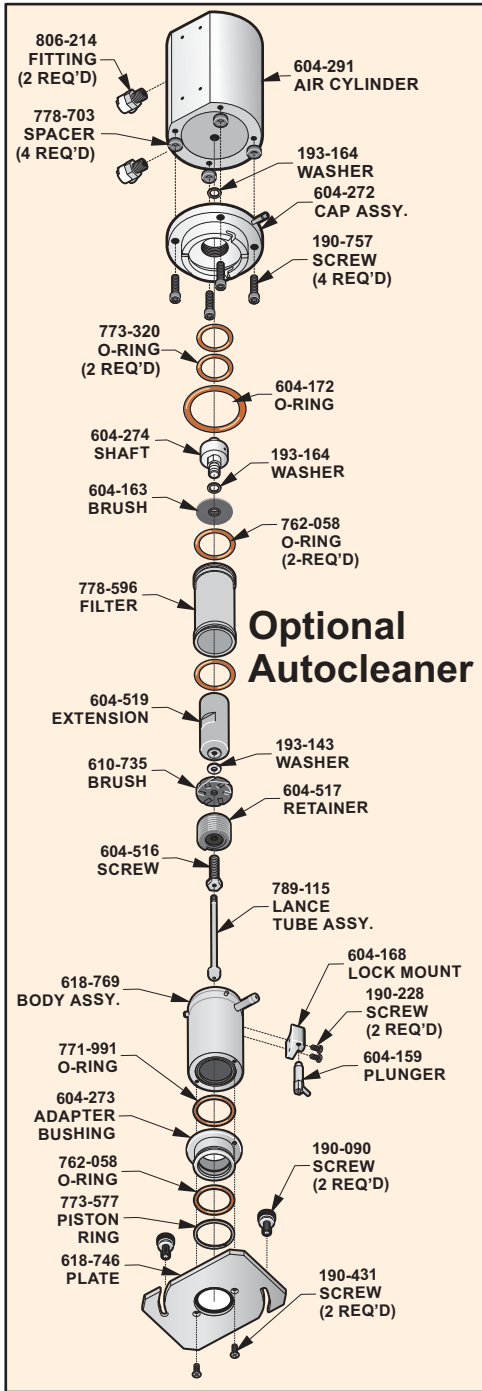
Table of Contents

230 Series.....	4
744 Series.....	6
844 Series.....	9
DH603.....	12
GDS850.....	14
GDS900.....	16
736 Series.....	18
836 Series.....	20
RC612	22
RHEN602	24
Upgrades and Options	26
Conversion Kits	28
Ordering Information	30

REFERENCE MATERIALS AND STANDARDS

Current part numbers and values for LECO Reference Materials and Standards (209-296) can be found at <https://www.leco.com/consumables>

LECO Consumables & Spare Parts



COMBUSTION SUPPLIES

528-018	Ceramic Crucible 1000/box
528-018HP	0 Sulfur Blank 1000/box
528-050	Ceramic Crucible 500/box, bags of 50
619-880	Crucible Cover 1000/Box
619-880-100	Crucible Cover 100/Box
772-905	Combustion Tube (Quartz)
772-906	Combustion Tube Ring
601-920	O-ring (Bottom of Combustion Tube)
762-058	O-ring (Top of Combustion Tube)
501-082	Wire Cleaning Brush
789-118	Lance Tube Assembly (w/o Autocleaner)
789-115	Lance Tube Assembly (w/Autocleaner)

ACCELERATORS

502-492	Copper Accelerator HP (0.44 lb/200 g)
501-263	Cu Chip Accelerator (-10 +30 mesh) (3 lb/1.36 kg)
501-077	Fe Chip (2 lb/0.9 kg)
763-467	Fe Chip (25 lb/11.35 kg)
501-264	Cu Chip (0.5 lb/227 g)
502-231	HP Fe (1 lb/0.5 kg)
763-026	LECOCEL [®] (30 lb/13.6 kg)
763-266	LECOCEL [®] (5 lb/ 2.27 kg)
501-008	LECOCEL [®] II (5 lb/2.27 kg)
502-173	LECOCEL [®] II HP (1.7 lb/0.75 kg)
502-297	LECOCEL [®] II (30 lb/13.6 kg)
763-027	LECOCEL [®] III (30 lb/13.6 kg)
763-263	LECOCEL [®] III (5 lb/2.27 kg)

CATALYSTS AND REAGENTS

501-171-HAZ	Anhydron (1 lb/454 g)
764-098	Cellulose (1 lb/454 g)

501-081	Glass Wool (1 lb/454 g)
502-174-HAZ	Lecosorb (500 g–20/30 Mesh)
501-587	Platinum/Silica (15 g)
502-177	Quartz Wool (50 g)

REAGENT TUBES

601-390	Anhydron Tube (Glass)
772-739	Catalyst Heater Tube (Glass)
771-030	Cellulose Filter Tube (Glass)
605-700-087	O-ring Pack
771-373	Reagent Tube–Measure Flow (Glass)

ACCESSORIES

761-929	Crucible Tong
789-149	EMI Gasket
503-032	Glass Scoop
773-579	Metal Accelerator Scoop, SST
760-138	Sample Tweezers, Straight
775-306	Secondary Filter, 10 micron
501-241	Vacuum Grease

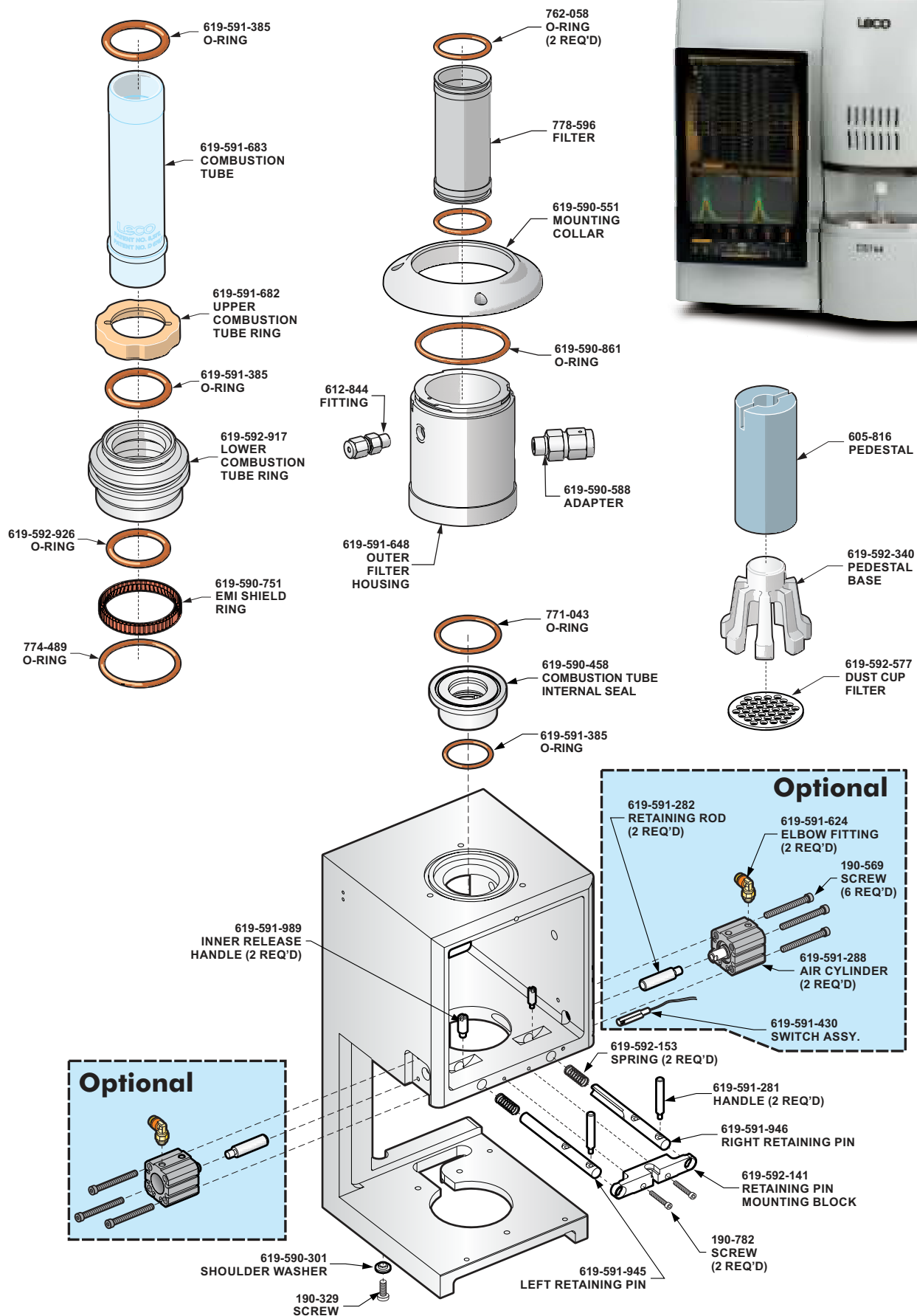
MAINTENANCE PARTS KITS

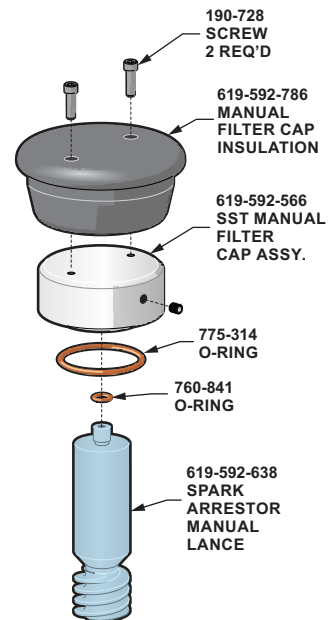
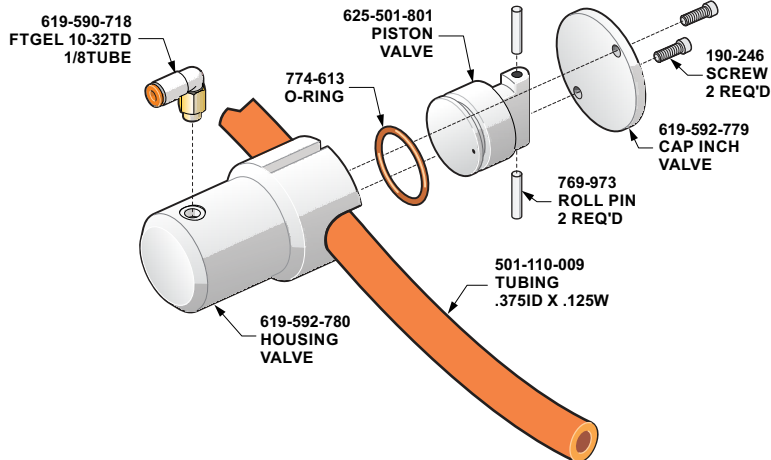
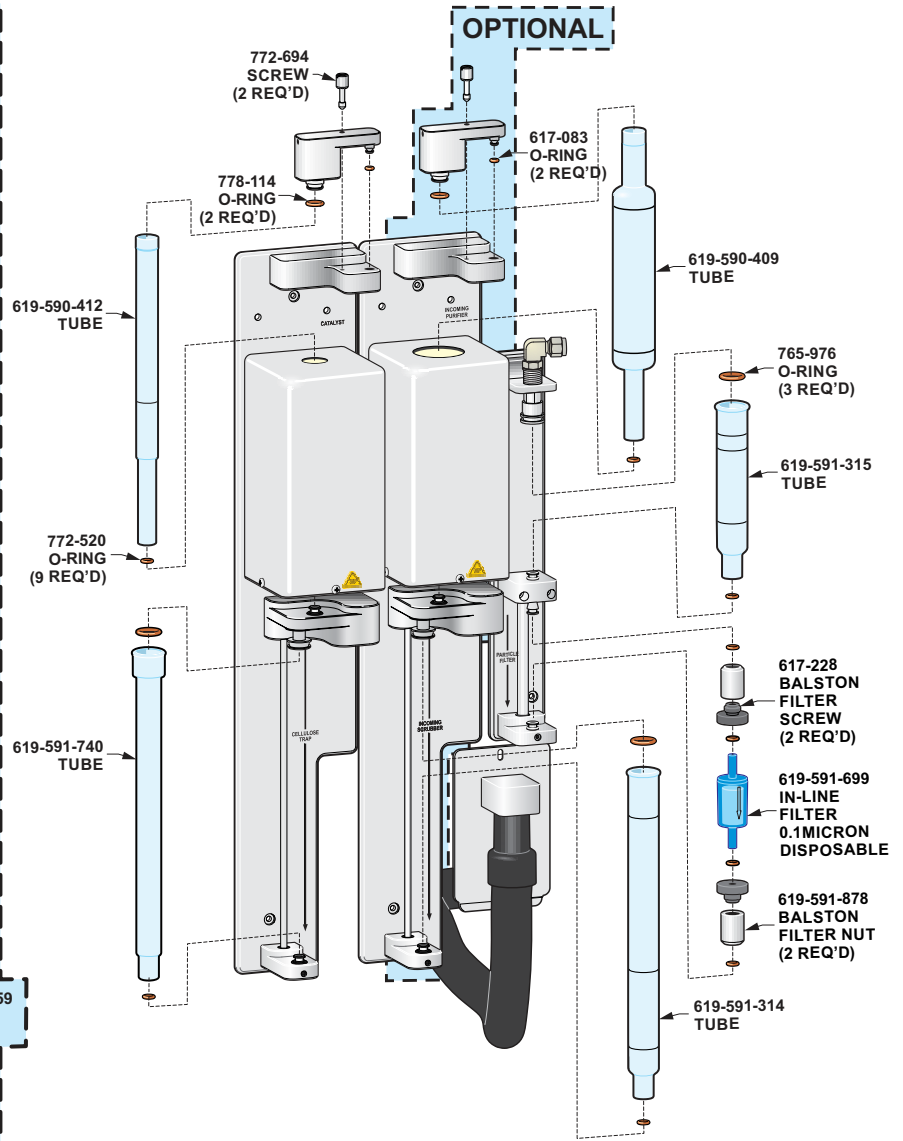
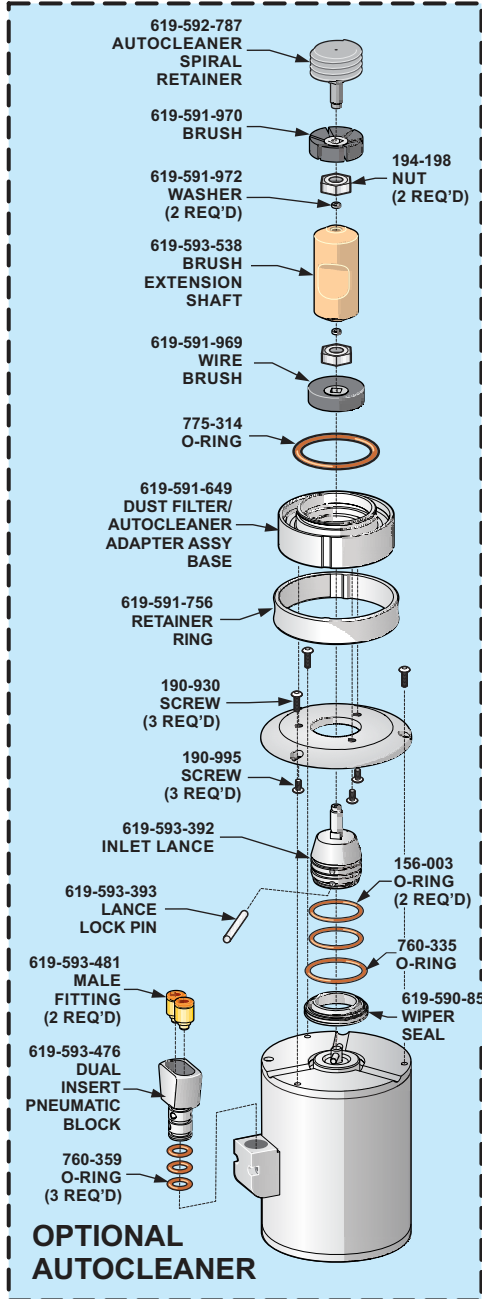
104-144	C/CS/S230 Maintenance Parts Kit
104-192	C/CS/S230 w/Manual Cleaner Maintenance Parts Kit
104-175	WC230 Maintenance Parts Kit

Please Note: Quartz Tubes are typically utilized for higher temperature applications (i.e. catalyst tubes). Glass reagent/filter tubes are designed for lower temperature applications. Glass tubes should not be used in place of quartz tubes.

REFERENCE MATERIALS AND STANDARDS

Current part numbers and values for LECO Reference Materials and Standard (209-296) can be found at <https://www.leco.com/consumables>





COMBUSTION SUPPLIES

528-018	Ceramic Crucible 1000/box
528-018HP	High Purity Ceramic Crucibles 1000/box
528-050	Ceramic Crucible 500/box, bags of 50
619-880	Ceramic Crucible Cover with Hole, 1000/box
619-880-100	Ceramic Crucible Cover with Hole, 100/box
619-591-683	Combustion Tube (Quartz)
778-596	Dust Filter (SST Filter)
619-593-443	Lance Cleaning Wire
619-591-970	Lower Cleaning Brush (Reworked Brush)
762-058	O-ring, Dust Filter
605-816	Silicon Nitride Pedestal
782-880	Filter
619-593-542	Vacuum Hose
501-082	Wire Cleaning Brush

ACCELERATORS

502-492	Copper Accelerator HP (0.44 lb/200 g)
501-263	Copper Metal Accelerator 1.36 kg (3 lb) bottle
501-640	Copper Metal Accelerator 9 kg (20 lb) container
501-264	Copper Metal Accelerator, 227 g (0.5 lb) bottle
502-231	High Purity Iron Accelerator 454 g (1 lb) bottle
501-077	Iron Chip Accelerator 0.9 kg (2 lb) bottle
763-026	LECOCEL® 13.6 kg (30 lb) container
763-266	LECOCEL® 2.27 kg (5 lb) bottle
502-297	LECOCEL® II (30 lb/13.6 kg)
501-008	LECOCEL® II 2.27 kg (5 lb) bottle
502-173	LECOCEL® II HP 750 g (1.7 lb) bottle
763-263	LECOCEL® III 2.27 kg (5 lb) bottle
763-027	LECOCEL® III 13.6 kg (30 lb) container

CATALYSTS AND REAGENTS

501-171-HAZ	Anhydron 454 g (1 lb) bottle
764-098	Cellulose 454 g (1 lb) package
502-174-HAZ	Lecosorb 500 g bottle, 20–30 mesh
502-176-HAZ	Lecosorb 500 g bottle, 8–20 mesh
501-587	Platinum/Silica 15 g bottle
502-177	Quartz Wool 50 g package
501-170	Rare Earth Copper Oxide 50 g bottle

REAGENT TUBES

619-590-412	Quartz Tube, requires one (1) 778-114 O-ring and one (1) 772-520 O-ring for sealing
619-590-409	Quartz Tube, requires one (1) 778-114 O-ring and one (1) 772-520 O-ring for sealing
619-591-740	Glass Tube, requires one (1) 765-976 O-ring and one (1) 772-520 O-ring for sealing
619-591-314	Glass Tube, requires one (1) 765-976 O-ring and one (1) 772-520 O-ring for sealing
619-591-315	Glass Tube, requires one (2) 772-520 O-ring and one (1) 765-976 O-ring for sealing

OPERATION ACCESSORIES

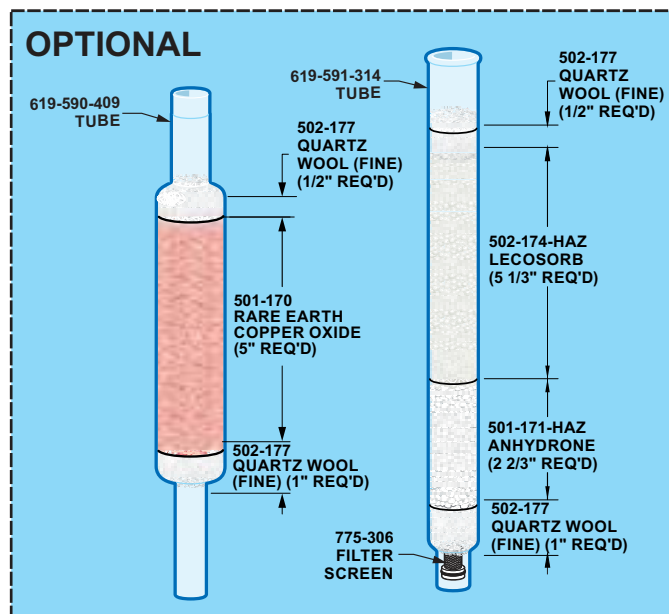
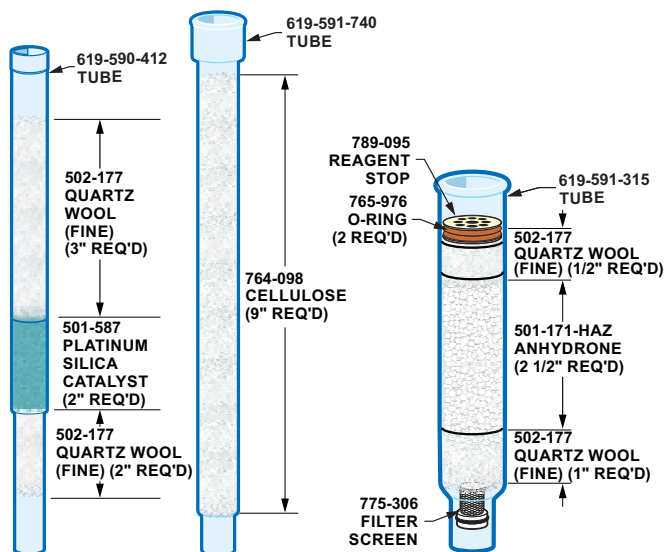
619-591-699	Balston Filter
761-929	Crucible Tongs
619-590-751	EMI Gasket
625-711-260	Screen/Doser Removal Tool
775-306	Secondary Filter, 10 micron
503-032	Glass Accelerator Scoop
773-579	Metal Accelerator Scoop
764-078	One gram Weight
760-138	Sample Tweezers
501-241	Vacuum Grease
502-023	Tube Funnel
762-515	O-Ring Removal Tool
502-237	Cleaning Wipes
619-592-597	Dust Removal Tool
614-704	Cabinet Air Filter (6.5 x 7.0 x 0.47 AL)

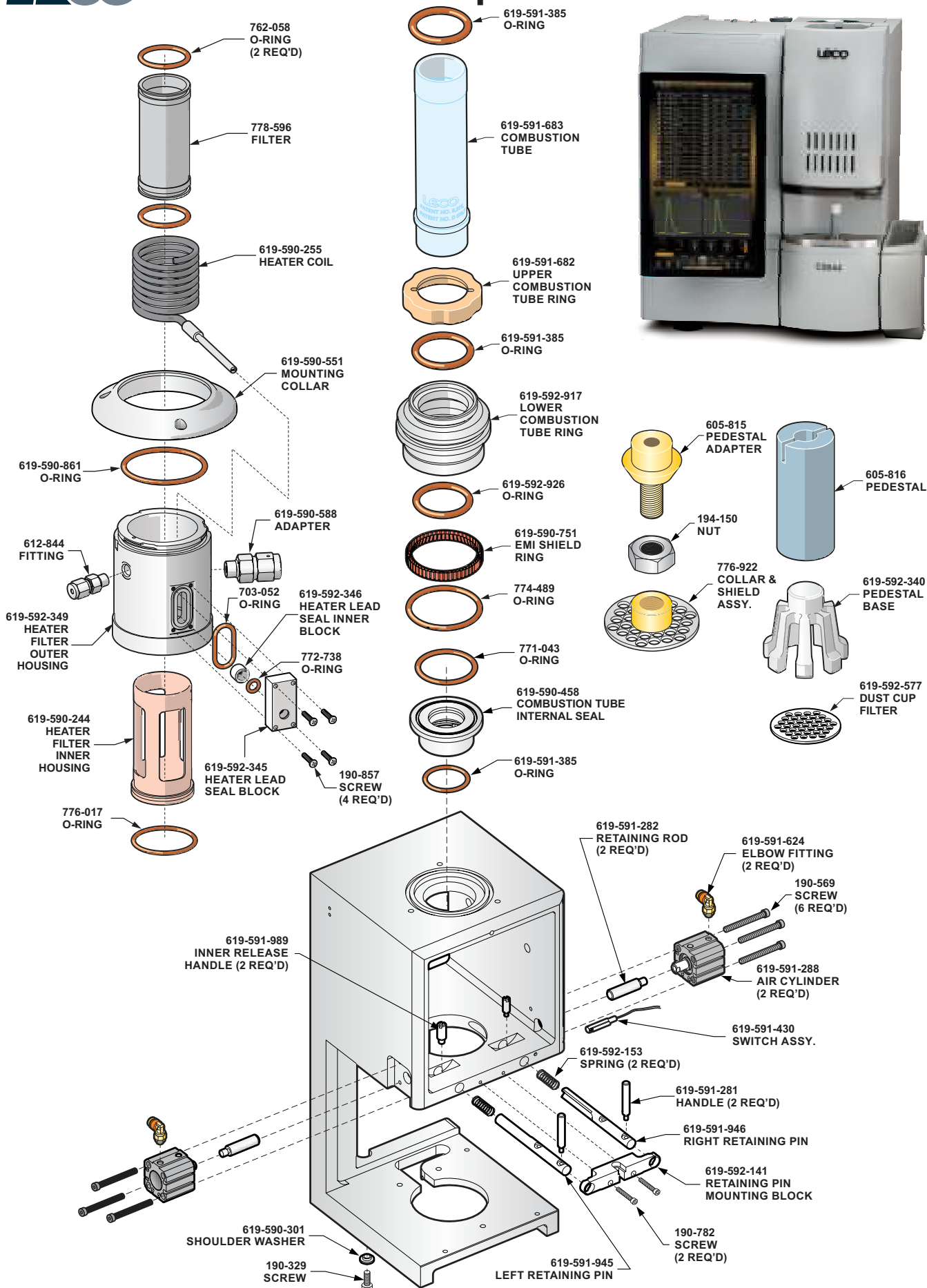
MAINTENANCE PARTS KITS

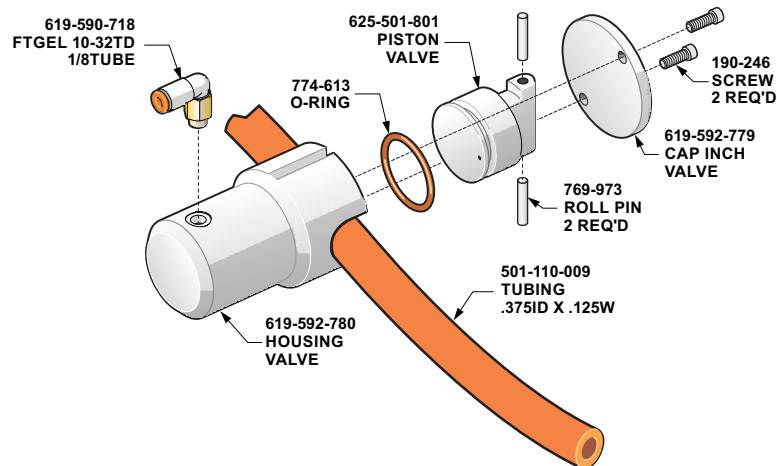
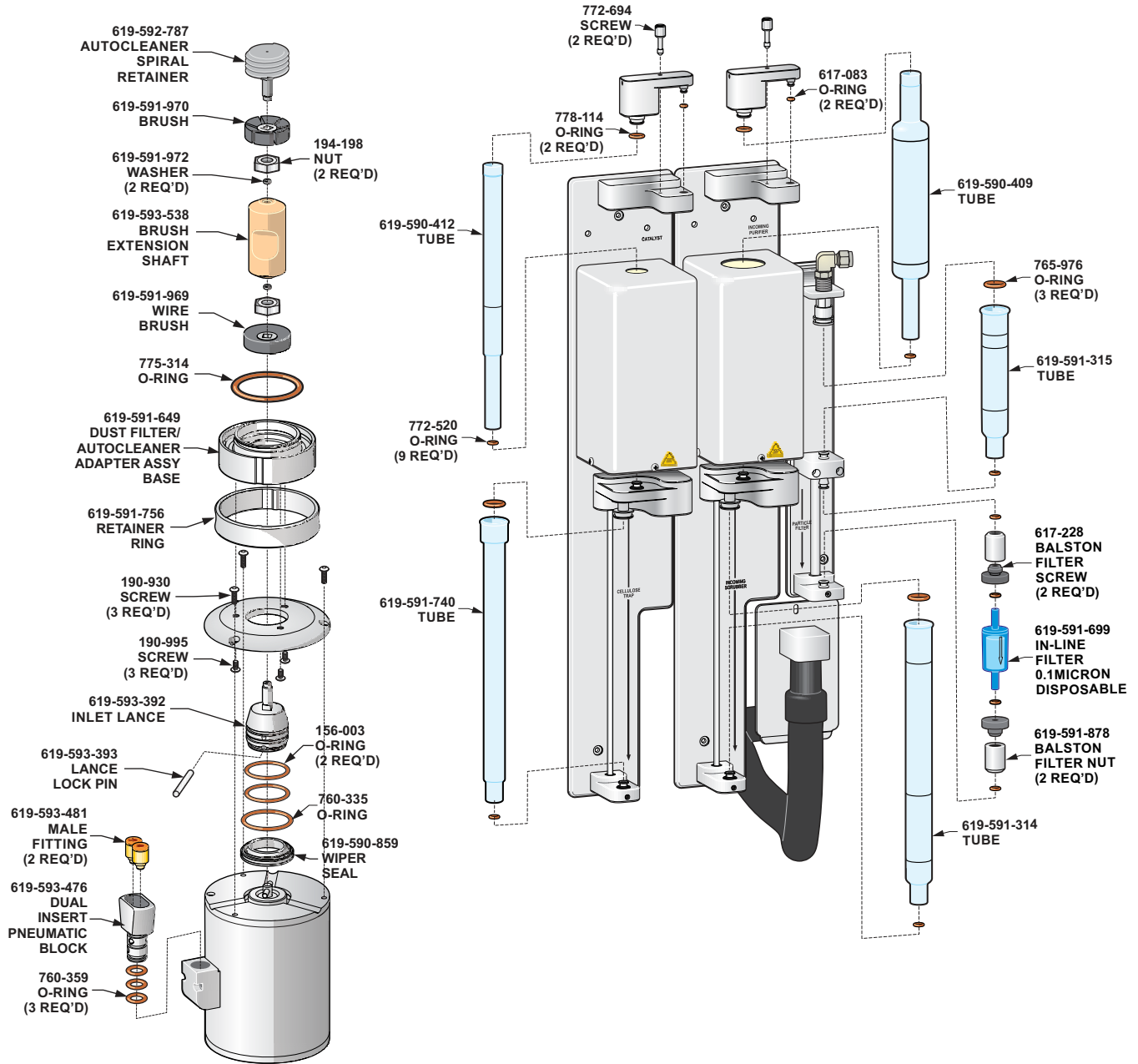
104-156	C/CS744 Manual Clean w/Perform MPK
104-157	C/CS744 Autoclean w/Perform MPK
104-158	C/CS744 Manual Clean w/o Perform MPK
104-159	C/CS744 Autoclean w/o Perform MPK
104-160	S744 w/Perform MPK
104-161	S744 Manual Clean w/o Perform MPK

REFERENCE MATERIALS AND STANDARDS

Current part numbers and values for LECO Reference Materials and Standard (209-296) can be found at <https://www.leco.com/consumables>







COMBUSTION SUPPLIES

528-018	Ceramic Crucible 1000/box
528-018HP	High Purity Ceramic Crucibles 1000/box
528-050	Ceramic Crucible 500/box, bags of 50
619-880	Ceramic Crucible Cover with Hole, 1000/box
619-880-100	Ceramic Crucible Cover with Hole, 100/box
619-591-683	Combustion Tube (Quartz)
778-596	Dust Filter (SST Filter)
619-593-443	Lance Cleaning Wire
619-591-970	Lower Cleaning Brush (Reworked Brush)
762-058	O-ring, Dust Filter
605-816	Silicon Nitride Pedestal
619-591-622	Vacuum Cleaner Filter; Disposable (Round Style)
619-591-454	Vacuum Cloth Bag Filter (Round Style)
619-591-456	Vacuum HEPA Filter (Round Style)
782-880	Filter (Square Style)
619-593-542	Vacuum Hose (Square Style)
501-082	Wire Cleaning Brush

ACCELERATORS

502-492	Copper Accelerator HP (0.44 lb/200 g)
501-263	Copper Metal Accelerator 1.36 kg (3 lb) bottle
501-640	Copper Metal Accelerator 9 kg (20 lb) container
501-264	Copper Metal Accelerator, 227 g (0.5 lb) bottle
502-231	High Purity Iron Accelerator 454 g (1 lb) bottle
501-077	Iron Chip Accelerator 0.9 kg (2 lb) bottle
763-026	LECOCEL® 13.6 kg (30 lb) container
763-266	LECOCEL® 2.27 kg (5 lb) bottle
502-297	LECOCEL® II (30 lb/13.6 kg)
501-008	LECOCEL® II 2.27 kg (5 lb) bottle
502-173	LECOCEL® II HP 750 g (1.7 lb) bottle
763-263	LECOCEL® III 2.27 kg (5 lb) bottle
763-027	LECOCEL® III 13.6 kg (30 lb) container

CATALYSTS AND REAGENTS

501-171-HAZ	Anhydron 454 g (1 lb) bottle
764-098	Cellulose 454 g (1 lb) package
502-174-HAZ	Lecosorb 500 g bottle, 20–30 mesh
502-176-HAZ	Lecosorb 500 g bottle, 8–20 mesh
501-587	Platinum/Silica 15 g bottle
502-177	Quartz Wool 50 g package
501-170	Rare Earth Copper Oxide 50 g bottle

REAGENT TUBES

619-590-412	Quartz Tube, requires one (1) 778-114 O-ring and one (1) 772-520 O-ring for sealing
619-590-409	Quartz Tube, requires one (1) 778-114 O-ring and one (1) 772-520 O-ring for sealing
619-591-740	Glass Tube, requires one (1) 765-976 O-ring and one (1) 772-520 O-ring for sealing
619-591-314	Glass Tube, requires one (1) 765-976 O-ring and one (1) 772-520 O-ring for sealing
619-591-315	Glass Tube, requires one (2) 772-520 O-ring and one (1) 765-976 O-ring for sealing

OPERATION ACCESSORIES

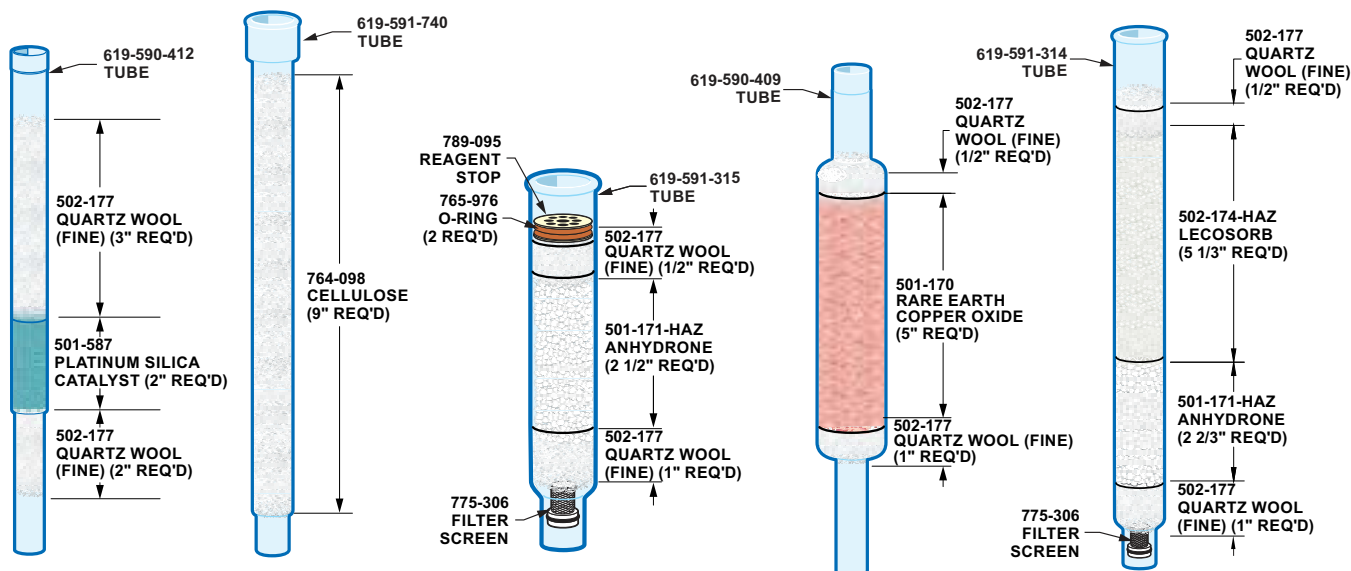
619-591-699	Balston Filter
761-929	Crucible Tongs
619-590-751	EMI Gasket
625-711-260	Screen/Doser Removal Tool
775-306	Secondary Filter, 10 micron
503-032	Glass Accelerator Scoop
773-579	Metal Accelerator Scoop
764-078	One gram Weight
760-138	Sample Tweezers
501-241	Vacuum Grease
502-023	Tube Funnel
762-515	O-Ring Removal Tool
502-237	Cleaning Wipes
619-592-597	Dust Removal Tool
614-704	Cabinet Air Filter (6.5 x 7.0 x 0.47 AL)

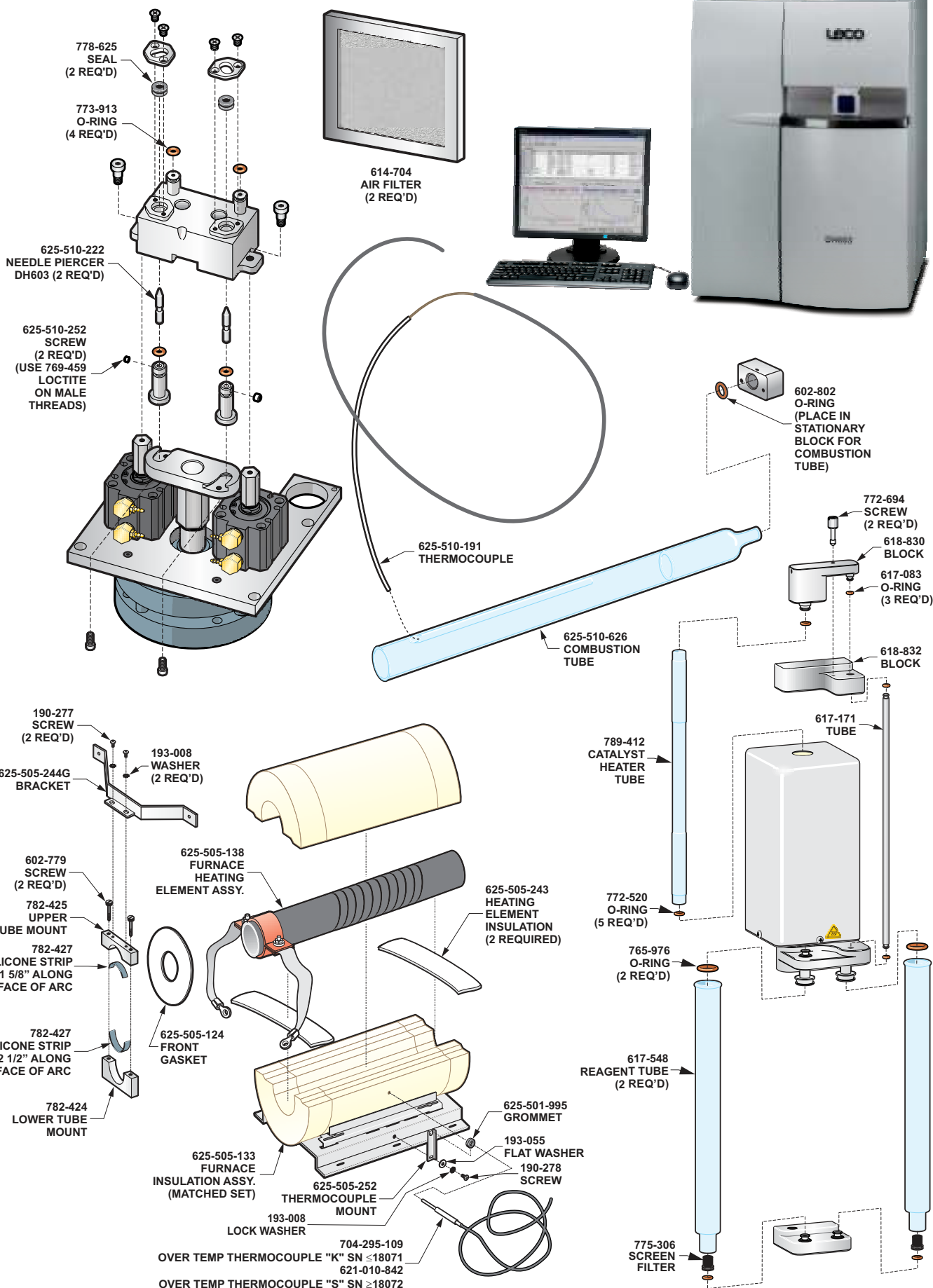
MAINTENANCE PARTS KITS

104-153	CS844 Maintenance Parts Kit
104-155	C844 Maintenance Parts Kit
104-154	S844 Maintenance Parts Kit

REFERENCE MATERIALS AND STANDARDS

Current part numbers and values for LECO Reference Materials and Standard (209-296) can be found at <https://www.leco.com/consumables>





DH603

OPERATING SUPPLIES

625-510-626 Combustion Tube

CATALYSTS AND REAGENTS

501-171-HAZ Anhydron 454 g (1 lb) bottle (10-16 mesh)
 502-878 Copper Sticks (100 g)
 501-081 Glass Wool 454 g (1 lb) bottle
 502-174-HAZ Lecosorb 500 g bottle, (20-30 mesh)
 502-176-HAZ Lecosorb 500 g bottle, (8-20 mesh)
 501-608 Quartz Wool 200 g bottle
 501-241 Vacuum Grease 3.5 oz.

REAGENT TUBES

617-548 Glass Reagent Tube, requires one 772-520 and two 765-976 O-rings
 789-412 Quartz Catalyst Heater Tube, requires two 772-520 O-rings
 625-510-129 Glass Reagent Tube, requires two 772-520 O-rings

EVACUATED STEEL SAMPLER WITH INNER STEEL PIN

903-9A3-184 3-foot Cardboard, 6-inch Non-Splash Sleeve with Anti-Skull Coat
 903-9A3-194 3-foot Cardboard, 12-inch Non-Splash Sleeve with Anti-Skull Coat

EVACUATED STEEL SAMPLER WITH QUARTZ LINING

903-9B3-184 3-foot Cardboard, 6-inch Non-Splash Sleeve with Anti-Skull Coat
 903-9B3-194 3-foot Cardboard, 12-inch Non-Splash Sleeve with Anti-Skull Coat

EVACUATED PIN TUBES FOR RAPID SAMPLING OF MOLTEN METALS

Part No.	Description	Dimensions	Qty.
511-036-150	Standard Pin Tube	4 mm \pm 0.2 mm (0.159" \pm 0.009") ID x ~146 mm (5.75") L	1500/pkg
511-039-150	Standard Pin Tube	3.5 mm \pm 0.2 mm (0.39" \pm 0.009") ID x ~146 mm (5.75") L	1500/pkg
511-037-150	Precision Pin Tube	4 mm \pm 0.025 mm (0.159" \pm 0.001") ID x ~146 mm (5.75") L	1500/pkg
511-244	High Vacuum Tube	6 mm (0.236") ID x 125 mm (4.92") L	100/pkg

OPERATION ACCESSORIES

619-995 Bar Code Reader, USB
 618-241 Nut Removal Tool
 511-038 Pin Tube Holder
 782-508 Quartz Wool Puller/Packing Tool Assembly
 625-505-137 Quartz Boat Tweezer
 625-510-146 Sample Puller Assembly
 761-822 Tool Kit
 760-138 Tweezer
 625-510-628 Type "K" to Type "S" Over Temp Thermocouple Conversion Kit

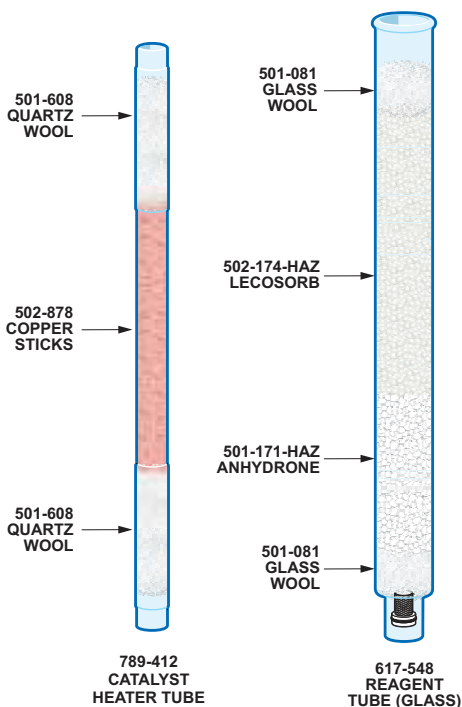
MAINTENANCE PARTS KITS

104-179 DH603 Maintenance Parts Kit

Please Note: Quartz Tubes are typically utilized for higher temperature applications (i.e. catalyst tubes). Glass reagent/filter tubes are designed for lower temperature applications. Glass tubes should not be used in place of quartz tubes.

REFERENCE MATERIALS AND STANDARDS

Current part numbers and values for LECO Reference Materials and Standard (209-296) can be found at <https://www.leco.com/consumables>



Lamp	Size	Cathode	Anode	Sleeve	O-Ring "A"	O-Ring "B"	Inner Spacer	RF Lamp Base
DC	2 mm*	618-389	618-386	618-385	609-114	618-382	618-297	N/A
DC	2 mm	616-999	612-823	691-103-350	607-315	534-356	618-296	N/A
DC	4 mm	616-999	612-815	691-103-350	607-315	534-356	618-296	N/A
RF	2 mm	N/A	612-860	691-103-350	607-315	534-356	N/A	612-857
RF	4 mm	N/A	612-859	691-103-350	607-315	534-356	N/A	612-857

CONSUMABLES

502-234-HAZ	Alcohol
502-237	Foam Wipes
534-356	Inner Sleeve O-ring (red)
607-302	Mist Oil Filter
607-303	Mist Odor Filter
621-339	Reamer Bit Assembly 4 mm
607-406	Ceramic Spacer O-ring (red)
607-623	Inner Lens Assembly O-ring
779-377	Vacuum Pump Oil (400 ml)
502-629	Lens Cleaning Tissue
612-509	Fomblin Grease
203-913	Printer Paper, 5000 sheets
619-572	Drill Bit, 4 mm (soft metals)
615-923	Suprasil Window (For wavelengths >165 nm)
611-351-192	Mg/FI Window; '98 non-heated (wavelength < 165 nm)
611-351-250	Mg/FI Window, heated
502-396	Fluid Cooling Sample RF, 1 gallon

SPARES

615-961	Suprasil Window Insert Assembly, includes (1) 610-770 Keeper, (1) 615-964 Washer, (1) 615-923 Window, (1) 612-805 O-ring, (1) 612-928 Holder
	<i>NOTE: (For wavelengths ≥165 nm)</i>

SLIDE WINDOW ASSEMBLY

612-928	Window Holder
612-805	O-ring
615-964	Teflon Washer
610-770	Keeper
578-672	O-ring Slidegate
615-923	Suprasil Window

TOOLS

617-274	Anode Alignment Tool/Sleeve Removal
612-399	Anode Depth Micrometer
612-799	Sleeve Removal Tool
612-811	Assy. Tool Window Holder

OPTIONS

612-933	Reamer - Soft Materials (4 mm Source)
619-580-107	Sample Holder, 3 mm, Wire
612-798	Sample Holder, 13 mm, Briquettes
612-774	Sample Holder, Porous Samples
612-775	Sample Holder, TRS Bar Holder
607-769	Reamer Assembly, 2 mm
618-384	Reamer Assembly, 2 mm Small
618-391	2 mm Lamp Small (6 mm O-ring) Kit
618-927	Puck 3 RF
259-002UPGR	Software Upgrade GDS850

'98 LAMP

607-315	Outer Sleeve O-ring, blue
534-356	Inner Ring O-ring, red
618-296	Inner Spacer
618-297	Inner Spacer, 2 mm Small
607-406	Ceramic O-ring
691-103-350	Sleeve, 4 mm
612-815	Anode, 4 mm
612-823	Anode, 2 mm
612-819	Spacer
190-389	Screw (lamp bolt)

RF LAMP

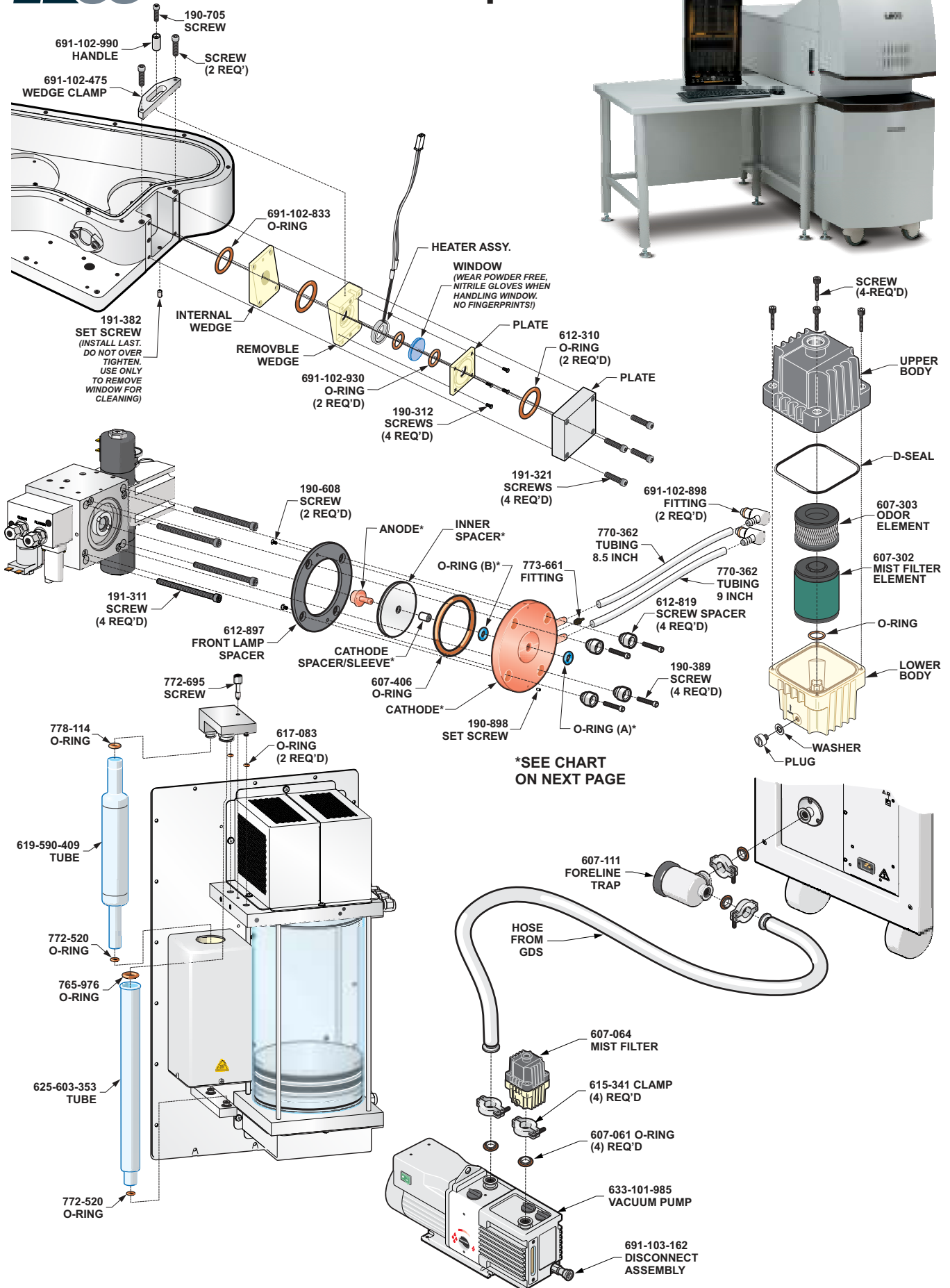
702-069	Retainer Insert
702-070	RF Anode Retainer
702-071	Insert Anode, RF, 2 mm Boron
702-072	Insert Anode, RF, 4 mm Boron
612-860	RF Anode, 2 mm
612-857	RF Anode, 4 mm

KITS

612-879	4 mm '98 Lamp Rebuild Kit (DC Lamp)
612-891	4 mm '98 Lamp Rebuild Kit (RF Lamp)
702-071-110	2 mm '98 Non-conductive Anode Kit
702-072-110	4 mm '98 Non-conductive Anode Kit

REFERENCE MATERIALS AND STANDARDS

Current part numbers and values for LECO Reference Materials and Standard (209-296) can be found at <https://www.leco.com/consumables>



Lamp	Size	Cathode	Anode	Sleeve	O-Ring "A"	O-Ring "B"	Inner Spacer	Reamer Assy
DC	4 mm	691-103-361	612-815	691-103-350	607-315	534-356	618-296	621-339
DC	2 mm	691-103-361	612-823	691-103-350	607-315	534-356	618-296	607-769
DC	2 mm Small	691-103-321	618-386	691-103-351	609-114	618-382	618-297	618-384

CONSUMABLES AND SUPPLIES

502-234-HAZ	Alcohol
502-237	Foam Wipes
502-259	Cleaning Pad
779-377	Vacuum Pump Oil
615-797	Cotton Swabs
502-629	Lens Tissues
612-879	4 mm Lamp Rebuild Kit
810-487	60 grit ZrO ₂ Belts Box/5
810-499	120 grit ZrO ₂ Belts Box/5
501-171-HAZ	Anhydrone
502-174-HAZ	Lecosorb 20/30
502-878	Copper Sticks
501-241	Vacuum Grease
502-177	Quartz Wool
775-306	Screen Filter
502-233	Alumina Pellets
691-102-756	Window
691-103-266	Conditioning Piece LC1-A

PMA KITS

104-204	Standard PMA Kit
104-205	Extended PMA Kit

TOOLS

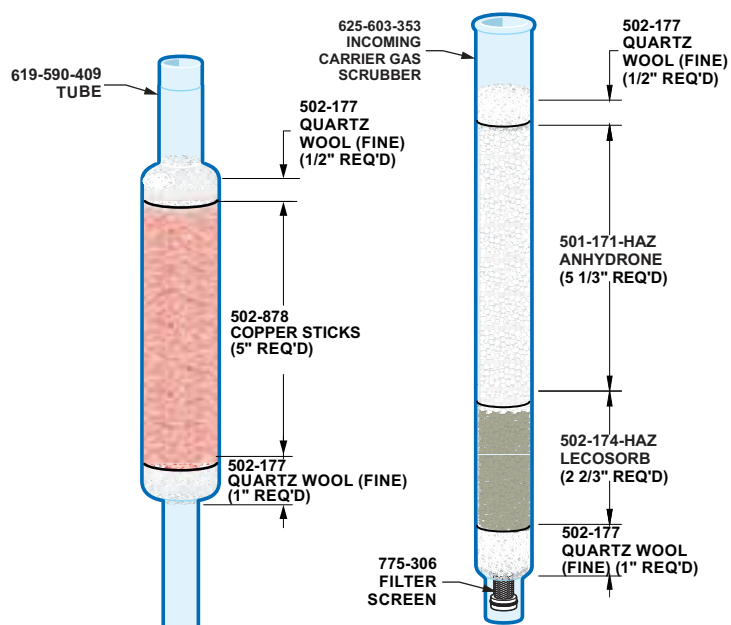
612-399	Anode Depth Gauge
607-309	Reamer Tool
691-101-505	Reamer Locking Tool
617-274	Sleeve Alignment Tool
612-799	4 mm Sleeve Removal Tool
612-812	Anode Removal Tool
612-599	Anode Alignment Tool
633-103-149	Reamed Anode Alignment Tool
691-103-120	Wrench 7mm
762-515	O-Ring Removal Tool
691-102-947	Water Fill Tool
607-791	Oil Drain Tool
607-298	Chapman Ratchet Kit

OPTIONAL ACCESSORIES

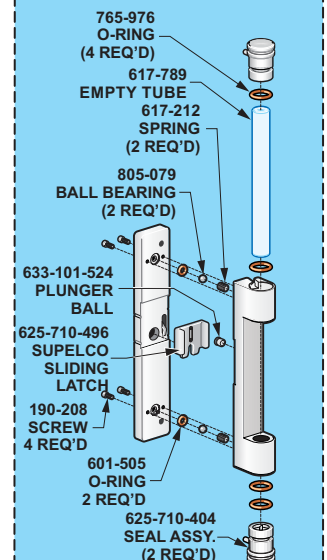
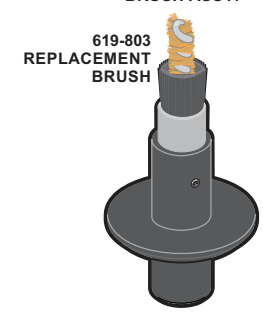
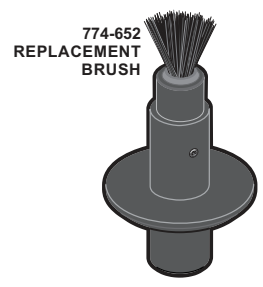
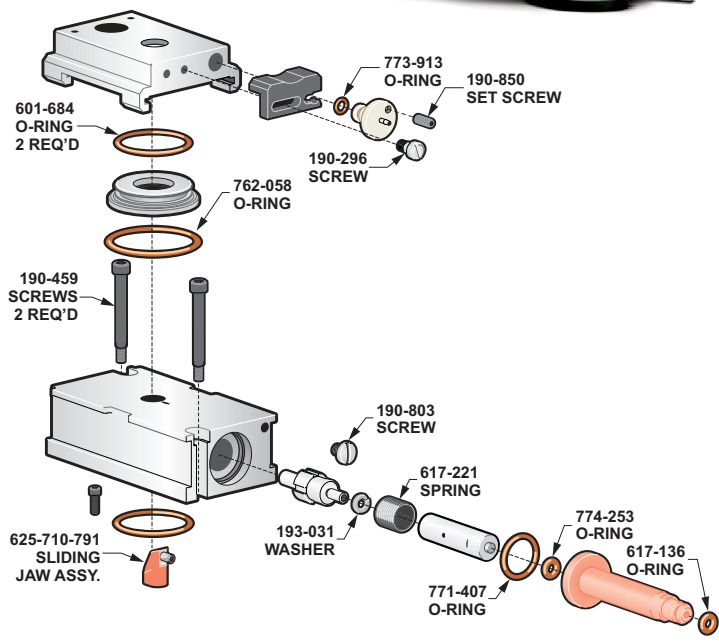
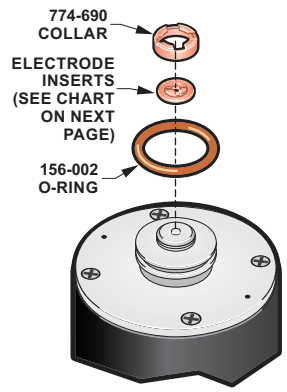
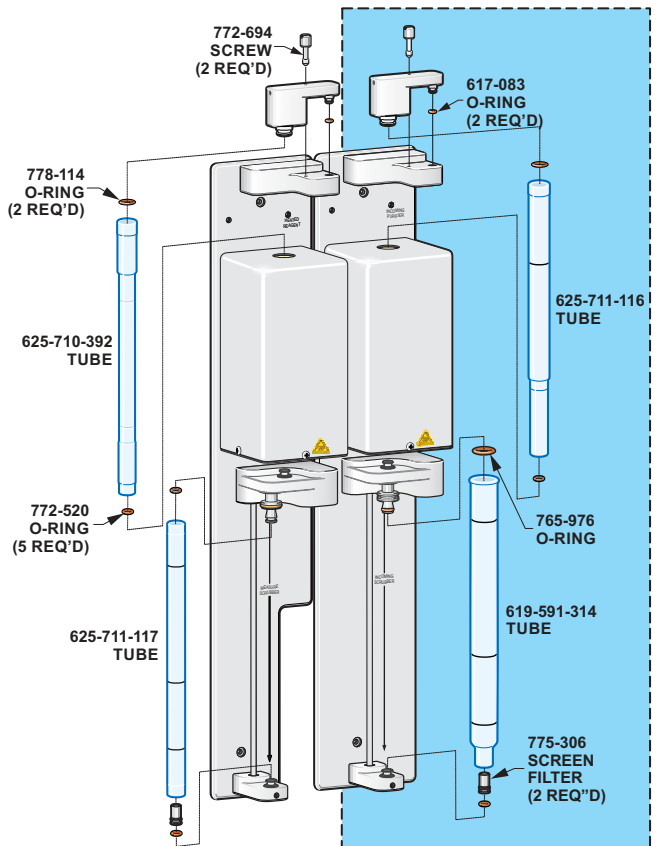
633-103-354	Compressed Air (CGA 346) 2-Stage Pressure Regulator Kit
633-103-358	Inert Gas (CGA 580) 2-Stage Pressure Regulator Kit
633-103-359	UHP In-Line (0 to 50) Pressure Regulator with Bracket Kit
691-102-650	Kit Table GDS Integrated
691-102-856	Kit Workstation Sit/Stand
691-103-430	Porous Sample Holder
691-103-474	Porous Sample Holder for Powder Metals, TRS Bars
612-798	Sample Briquette Holder
612-933	4 mm Soft Material Reamer
691-103-425	3 mm Wire Sample Holder
691-103-306	Vacuum Pump Sound Abatement Enclosure

REFERENCE MATERIALS AND STANDARDS

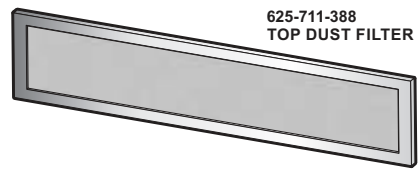
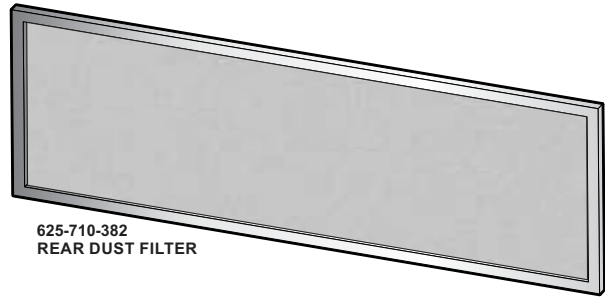
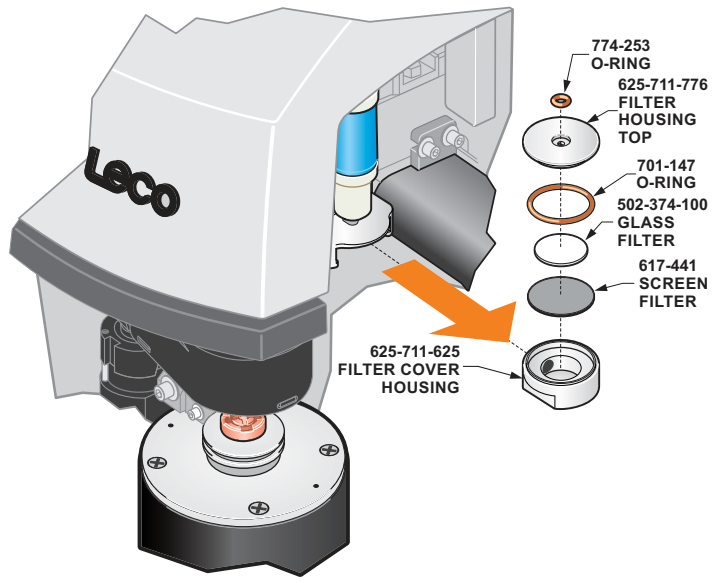
Current part numbers and values for LECO Reference Materials and Standard (209-296) can be found at <https://www.leco.com/consumables>



LECO Consumables & Spare Parts



OPTIONAL PERFORMANCE PACKAGE



Electrode Insert	Crucible	Supports Automation
611-351-181	776-247	Yes
611-351-182	776-247	No
618-376	782-720	Yes
782-721	782-720	No

FUSION SUPPLIES

776-247	Crucible (Standard), 1000
782-720	Crucible (Hi-Temp), 1000
501-598	Etchable Nibbled Nickel 100 g bottle
501-073	Graphite Powder 100 g bottle
502-040	Large Tin Capsule 100/bottle
617-866	Lower Electrode Assembly, requires 156-002 O-ring, includes: 625-712-244 Electrode, 774-690 Knurled Ring (Collar), Electrode Insert (see chart above)
502-822	Nickel Capsule 100/bottle
502-345	1.5 g Nickel Baskets Ultra High Purity 100/bottle
502-344	1.0 g Nickel Baskets Ultra High Purity 100/bottle
501-059	Small Tin Capsule 100/bottle
761-739	Tin Flux (Pellets), 0.5 g

*Not part of 617-866 Assembly

CATALYSTS AND REAGENTS

501-171-HAZ	Anhydron 454 g (1 lb) bottle
502-705	Copper Sticks 100 g ampule
502-878	Copper Sticks 100 g bottle
502-995	Copper Turning 60 g bottle
501-081	Glass Wool 454 g (1 lb) box
502-174-HAZ	Lecosorb 500 g bottle, 20-30 mesh
502-176-HAZ	Lecosorb 500 g bottle, 8-20 mesh
783-785-110-HAZ	OMI Replacement Tube
501-608	Quartz Wool, 200 g
501-170	Rare Earch Copper Oxide, 50 g

OPERATION ACCESSORIES

619-591-724	Coolant
766-053	Crucible Tweezers
611-373	Electrode Insert Removal Tool
502-374-100	Filter Discs
775-306	Secondary Filter, 10 micron
502-023	Funnel
503-032	Glass Scoop
619-591-740	Medium Reagent Tube (Glass)
775-305	Sample Pan
760-138	Sample Tweezers (Straight)
625-711-260	Screen/Doser Stem Removal Tool
501-241	Vacuum Grease
767-473	Utility Funnel, Polypropylene
620-760	Vacuum Filter

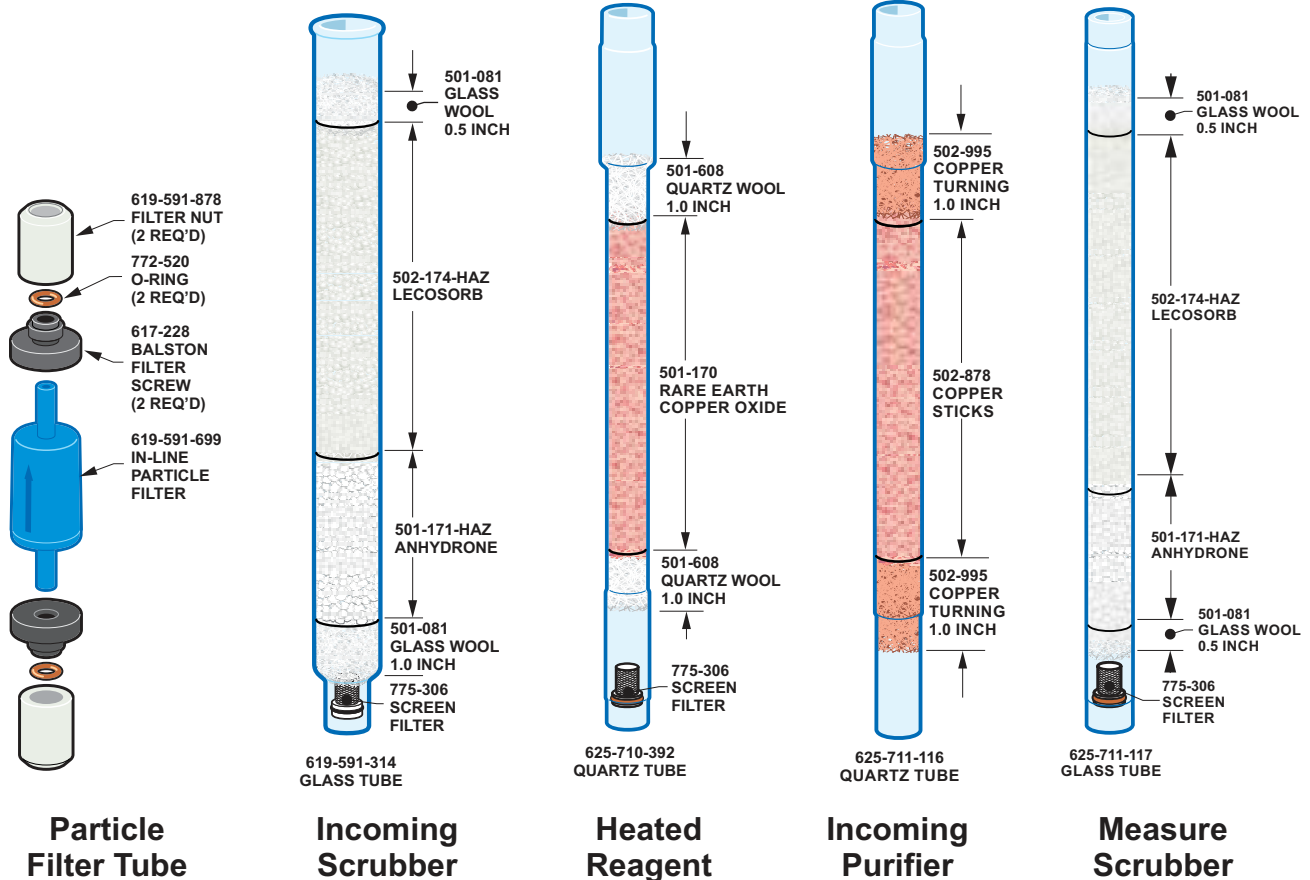
MAINTENANCE PARTS KITS

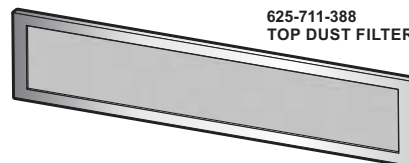
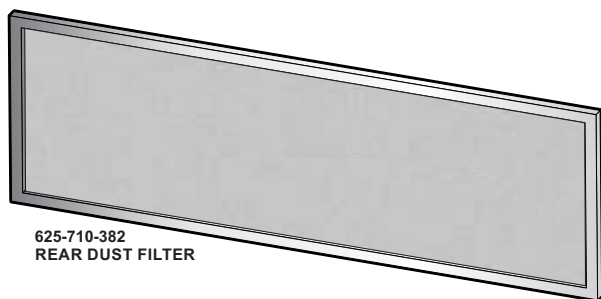
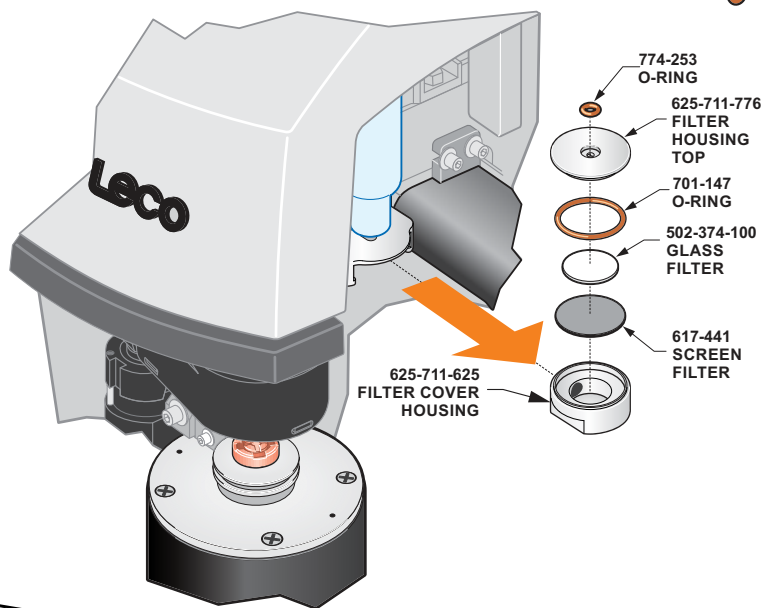
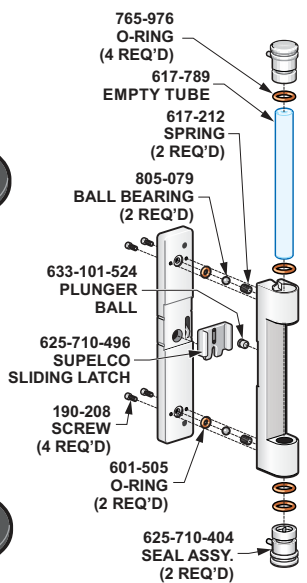
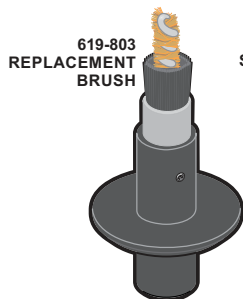
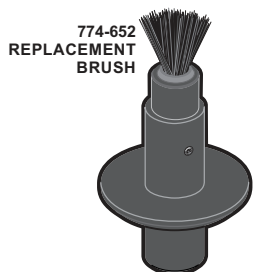
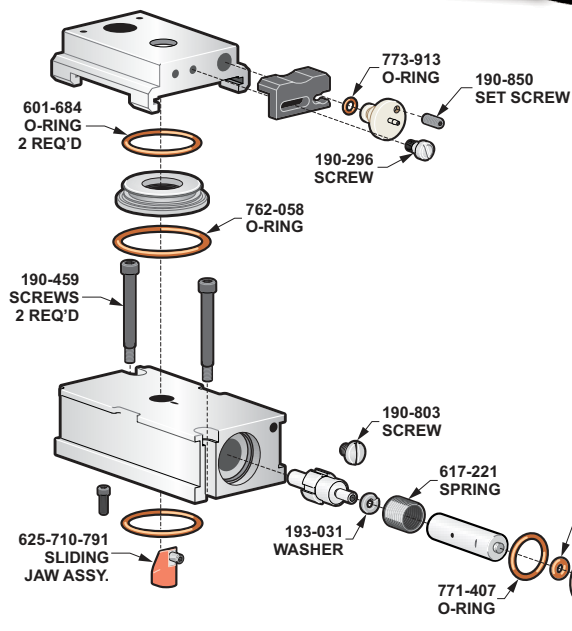
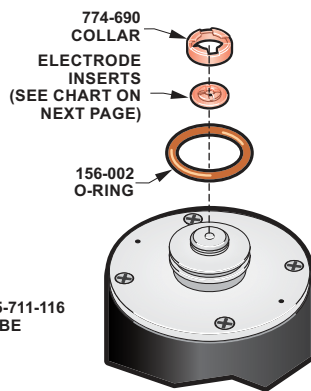
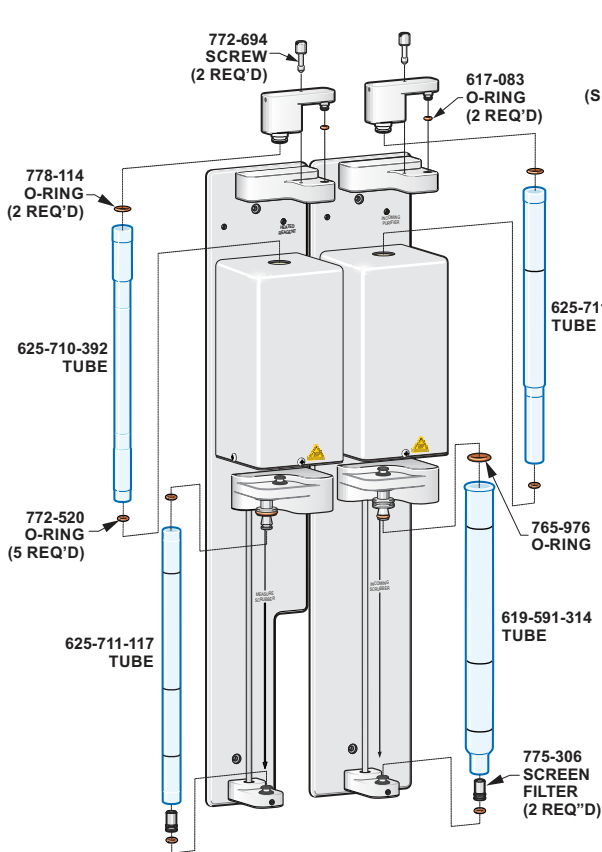
104-181	O/N736 w/Perform Maintenance Parts Kit
104-183	O/N736 w/o Perform Maintenance Parts Kit

Please Note: Quartz Tubes are typically utilized for higher temperature applications (i.e. catalyst tubes). Glass reagent/filter tubes are designed for lower temperature applications. Glass tubes should not be used in place of quartz tubes.

REFERENCE MATERIALS AND STANDARDS

Current part numbers and values for LECO Reference Materials and Standard (209-296) can be found at <https://www.leco.com/consumables>





Electrode Insert	Crucible	Supports Automation
611-351-181	776-247	Yes
611-351-182	776-247	No
618-376	782-720	Yes
782-721	782-720	No

FUSION SUPPLIES

- 776-247 Crucible (Standard), 1000
- 782-720 Crucible (Hi-Temp), 1000
- 501-598 Etchable Nibbled Nickel 100 g bottle
- 501-073 Graphite Powder 100 g bottle
- 502-040 Large Tin Capsule 100/bottle
- 617-866 Lower Electrode Assembly, requires 156-002 O-ring, includes: 625-712-244 Electrode, 774-690 Knurled Ring (Collar), Electrode Insert (see chart above)
- 502-822 Nickel Capsule 100/bottle
- 502-345 1.5 g Nickel Baskets Ultra High Purity 100/bottle
- 502-344 1.0 g Nickel Baskets Ultra High Purity 100/bottle
- 501-059 Small Tin Capsule 100/bottle
- 761-739 Tin Flux (Pellets), 0.5 g

*Not part of 617-866 Assembly

CATALYSTS AND REAGENTS

- 501-171-HAZ Anhydron 454 g (1 lb) bottle
- 502-705 Copper Sticks 100 g ampule
- 502-878 Copper Sticks 100 g bottle
- 502-995 Copper Turnings 60 g bottle
- 502-190 Copper Oxide Wire 100 g bottle
- 501-081 Glass Wool 454 g (1 lb) box
- 502-174-HAZ Lecosorb 500 g bottle, 20-30 mesh
- 502-176-HAZ Lecosorb 500 g bottle, 8-20 mesh
- 783-785-110-HAZ OMI Replacement Tube
- 501-608 Quartz Wool, 200 g

OPERATION ACCESSORIES

- 619-591-724 Coolant
- 766-053 Crucible Tweezers
- 611-373 Electrode Insert Removal Tool
- 502-374-100 Filter Discs
- 775-306 Secondary Filter, 10 micron
- 502-023 Funnel
- 503-032 Glass Scoop
- 619-591-740 Medium Reagent Tube (Glass)
- 775-305 Sample Pan
- 760-138 Sample Tweezers (Straight)
- 625-711-260 Screen/Doser Stem Removal Tool
- 501-241 Vacuum Grease
- 767-473 Utility Funnel, Polypropylene
- 620-760 Vacuum Filter

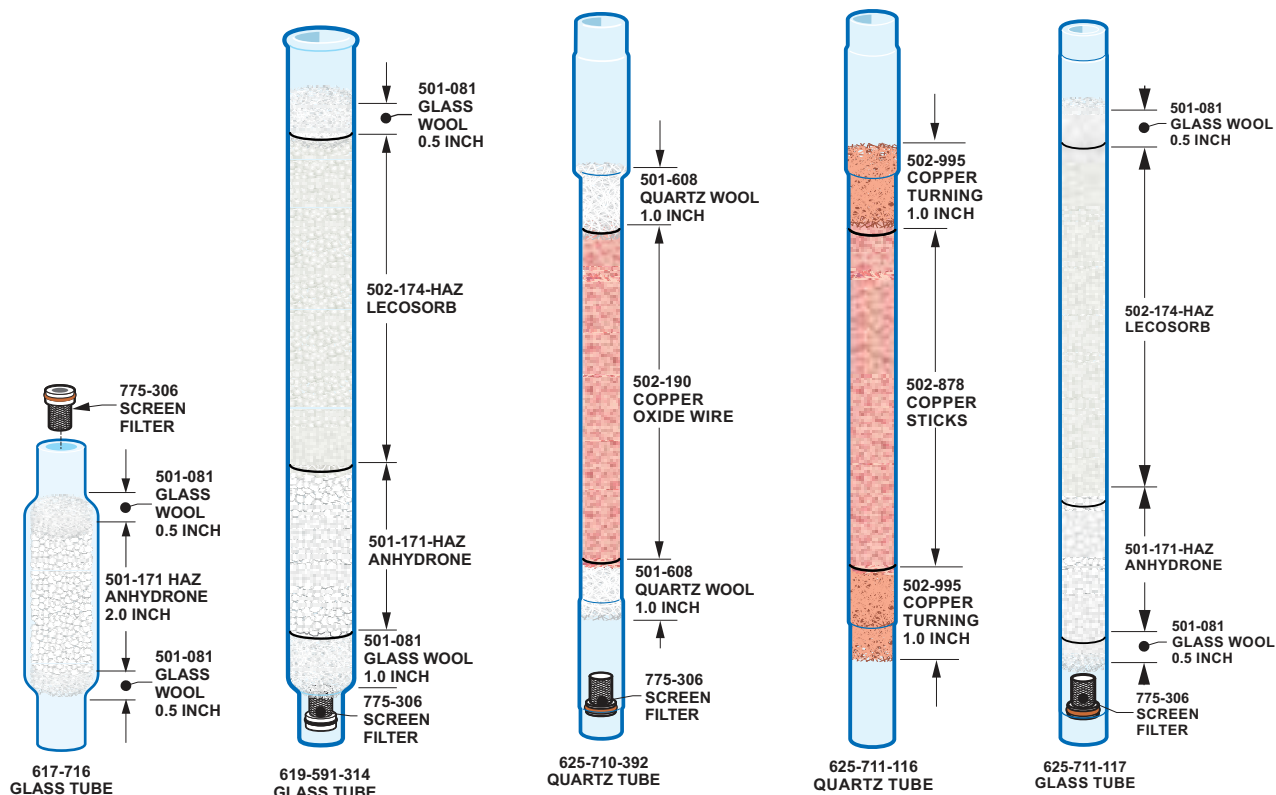
MAINTENANCE PARTS KITS

- 104-152 ONH836 Series Maintenance Parts Kit

Please Note: Quartz Tubes are typically utilized for higher temperature applications (i.e. catalyst tubes). Glass reagent/filter tubes are designed for lower temperature applications. Glass tubes should not be used in place of quartz tubes.

REFERENCE MATERIALS AND STANDARDS

Current part numbers and values for LECO Reference Materials and Standard (209-296) can be found at <https://www.leco.com/consumables>



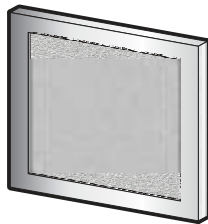
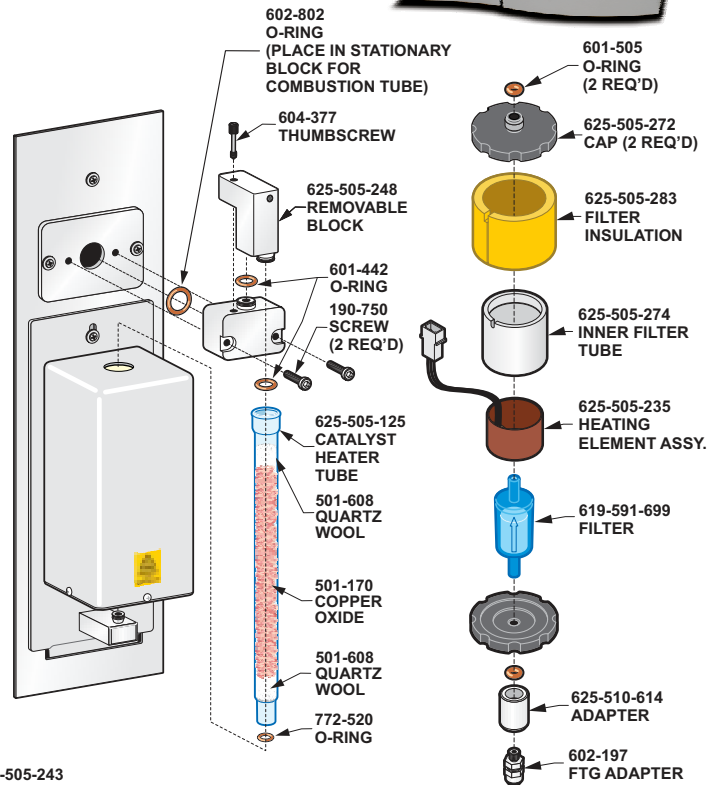
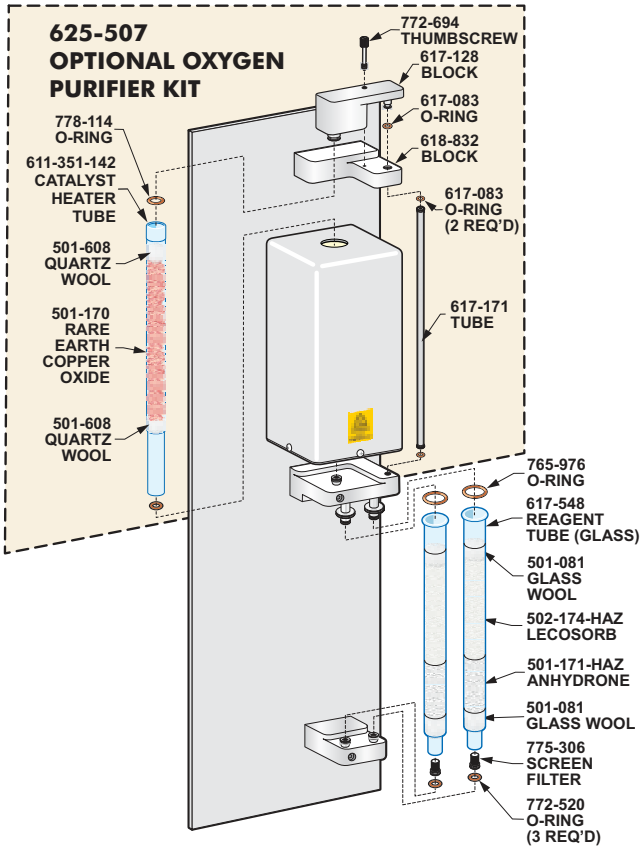
Anhydron Tube

Incoming Scrubber

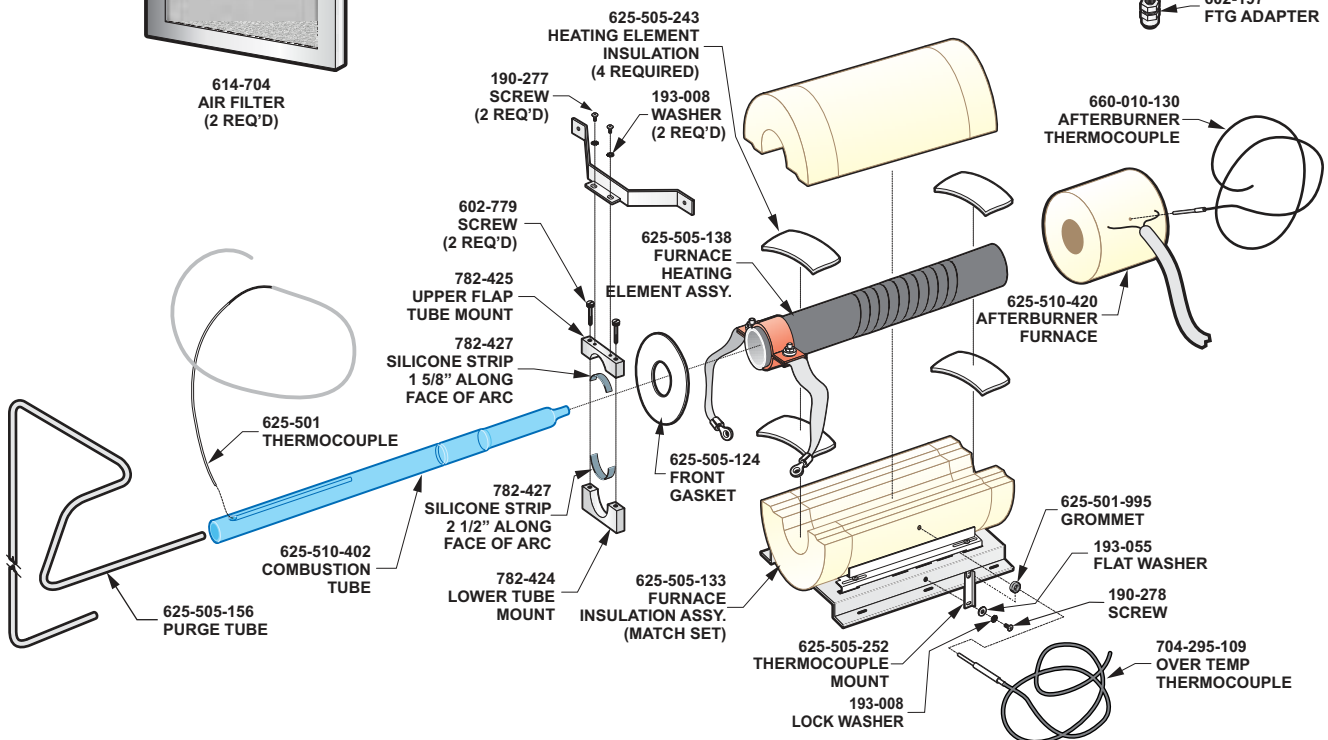
Heated Reagent

Incoming Purifier

Measure Scrubber



614-704 AIR FILTER (2 REQ'D)



RC612



Consumables & Spare Parts

OPERATING SUPPLIES

781-335	Quartz Boat
782-059	Nickel Boat Liner (10/pkg)
625-510-402	Combustion Tube
625-505-430	Nickel Boats (50/pkg)

CATALYSTS AND REAGENTS

501-171-HAZ	Anhydron 454 g (1 lb.) bottle (10-16 mesh)
501-170	Copper Oxide 50 g bottle
502-156	Fluorhib (1 lb.)
502-493	Fluorhib HP (35 g)
501-081	Glass Wool 454 g (1 lb.) bottle
502-174-HAZ	Lecosorb 500 g bottle, (20-30 mesh)
502-176-HAZ	Lecosorb 500 g bottle, (8-20 mesh)
501-608	Quartz Wool 200 g bottle

REAGENT TUBES

617-548	Glass Anhydron Tube, requires two 772-520 O-rings
625-505-125	Quartz Catalyst Heater Tube, requires two 772-520 O-rings

OPERATION ACCESSORIES

780-044	Boat Puller Assembly
761-929	Crucible Tongs
782-508	Quartz Wool Puller/Packing Tool Assembly
501-614	Spatula
625-505-137	Quartz Boat Tweezer

MAINTENANCE PARTS KITS

104-173	RC612 Maintenance Parts Kit
---------	-----------------------------

Please Note: Quartz Tubes are typically utilized for higher temperature applications (i.e. catalyst tubes). Glass reagent/filter tubes are designed for lower temperature applications. Glass tubes should not be used in place of quartz tubes.

REFERENCE MATERIALS AND STANDARDS

Current part numbers and values for LECO Reference Materials and Standard (209-296) can be found at <https://www.leco.com/consumables>



Consumables & Spare Parts

FUSION SUPPLIES

501-598	Etchable Nibbled Nickel 100 g bottle
501-073	Graphite Powder 100 g bottle
502-040	Large Tin Capsule 100/bottle
611-351-180	Lower Electrode Tip (for 764-330 Crucibles with Automation)
611-351-183	Lower Electrode Tip (for 764-330 Crucibles with Automation)
619-896	Lower Electrode Tip (for 619-895 Crucibles)
502-822	Nickel Capsule 100/bottle
502-345	1.5 g Nickel Baskets Ultra High Purity 100/bottle
502-344	1.0 g Nickel Baskets Ultra High Purity 100/bottle
501-059	Small Tin Capsule 100/bottle
761-744	Molecular Sieve Assembly

CATALYSTS AND REAGENTS

501-171-HAZ	Anhydron 454 g (1 lb.) bottle
502-705	Copper Sticks 100 g ampule
502-878	Copper Sticks 100 g bottle
502-995	Copper Turnings 60 g bottle
501-081	Glass Wool 454 g (1 lb.) box
501-073	Graphite Powder 100 g bottle
502-174-HAZ	Lecosorb 500 g bottle, 20-30 mesh
502-176-HAZ	Lecosorb 500 g bottle, 8-20 mesh
761-747-HAZ	Schutze Reagent

OPERATION ACCESSORIES

766-053	Crucible Tweezers
766-646	Air Filter Coating
775-306	Secondary Filter, 10 micron
775-307	Screen Filter Removal Tool (Thumbscrew)
625-711-599	Lubricool Cooling Agent
764-078	One gram Weight
783-785-110-HAZ	Replacement Tube for 783-786 Kit
760-138	Sample Tweezers (Straight)
501-241	Vacuum Grease
767-473	Utility Funnel
620-760	Vacuum Filter (Ash Vac)
618-809	Medium Reagent Tube (Glass)

MAINTENANCE PARTS KITS

104-151	RHEN602 Maintenance Parts Kit
---------	-------------------------------

Please Note: Quartz Tubes are typically utilized for higher temperature applications (i.e. catalyst tubes). Glass reagent/filter tubes are designed for lower temperature applications. Glass tubes should not be used in place of quartz tubes.

REFERENCE MATERIALS AND STANDARDS

Current part numbers and values for LECO Reference Materials and Standard (209-296) can be found at <https://www.leco.com/consumables>

LECO Upgrades and Options

BALANCES

751-060-110	4-Place Balance/Interface Kit, Basic (0.1 mg)
751-350-110	4-Place Balance/Interface Kit (0.1 mg)
751-700-120	5-Place Balance/Interface Kit (0.01 mg)
751-600-120	6-Place Balance/Interface Kit (0.001 mg)

CS230 SERIES

259-059UPGR	Software Upgrade
CF10	Gas Purification Unit
617-249-HAZ	CS Halogen Trap Kit
621-891	Vacuum Cleaner Kit
621-895	Windows Upgrade Kit (Software, Comm Cable)
621-896	PC Upgrade Kit (PC, Monitor, Keyboard, Mouse, and PC Software)
621-897	Autocleaner Kit (requires 621-891)
625-513G	Shuttle Loader Kit (without autocleaner)
625-514G	Shuttle Loader/Autocleaner Kit

744 SERIES

619-591-790	Element Filter for 619-590-485 AF10
619-591-840	Kit Shuttle Loader C/S 60-Pos
619-592-490	Pack O-Ring C/CS/S844
782-880	Filter Vacuum 0.3 Micron
619-592-150	Kit Trap Fluorine/Chlorine
619-592-685	Kit Upgrade Fan Variable Speed w/o Software
619-591-845	Kit Loader Shuttle C/S 10 Pos
619-592-750	Kit Add-On Cleaner Manual Non-Heated Filter
619-592-752	Kit Add-On Autocleaner Non-Heated Filter
619-592-754	Kit Add-On Monitor Touchscreen Mounted
625-711-693	Kit Assembly Card Furnace Fan Control C/S/CS
625-711-855	Element Filter for 625-711-840

844 SERIES

619-592-150	FI/CI Trap Kit
619-591-454	Bag Vacuum Cloth Permanent
619-591-456	Filter HEPA Vacuum
619-591-622	Bag Vacuum Disposable (5 pk) and Filters (2 pk)
619-591-790	Element Filter for 619-590-485 AF10
619-592-150	Kit Trap Fluorine/Chlorine
619-591-840	Kit Loader Shuttle C/S 60-Pos
619-592-490	Pack O-Ring C/CS/S844
619-591-845	Kit Loader Shuttle C/S 10-Pos
782-880	Filter Vacuum 0.3 Micron
619-593-542	Hose Vacuum
619-592-504	Kit Replacement Vacuum Dust 744/844
619-592-670	Kit Upgrade Fan Variable Speed w/Software
619-592-672	Kit Upgrade Fan Variable Speed SN ≈3084 w/Card
619-592-674	Kit Upgrade Fan Variable Speed SN ≈3084 w/o Card
619-593-162	Assembly Cap/Lance Filter Dust Heated Manual
619-593-161	Assembly Cap/Lance Filter Dust Non-Heated Manual
625-711-855	Element Filter for 625-711-840
619-592-895	Kit Cooling Control Upgrade

DH603

259-069UPGR	Software Upgrade
-------------	------------------

736 SERIES

625-710-880	Pack O-Ring
625-711-465	Kit Bracket Hood Vent
625-711-470	Kit Add-On Autocleaner O/N/H
625-712-206	Kit Add-On 20-Pos Crucible Shuttle Loader SN ° 3131
625-711-736	Kit Add-On Carousel Sample 20-Pos
625-712-210	Kit Add-On 20-Pos Crucible Shuttle Loader/ Sample Carousel SN ° 3131
625-711-855	Replacement Element Filter for 625-711-840
625-711-887	Kit Sound Reduction Vacuum Enclosure
625-711-885	Kit Liquid to Liquid to Dual Cooling Conversion

836 SERIES

625-711-180	Liquid-Liquid Heat Exchanger Add-On Kit
619-591-790	Element Filter for 619-590-485
625-710-880	Pack O-Ring
625-711-729	Kit Upgrade Filter Furnace Disc SN 3044-3279
625-711-855	Replacement Element Filter for 625-711-840
625-711-887	Kit Sound Reduction Vacuum Enclosure
625-712-204	Kit Add-On 20-Pos Crucible Shuttle Loader SN ≈3130
625-712-206	Kit Add-On 20-Pos Crucible Shuttle Loader SN ° 3131
625-712-208	Kit Add-On 20-Pos Sample Carousel
625-712-210	Kit Add-On 20-Pos Crucible Shuttle Loader/Sample Carousel SN ≈3130
625-711-740	Kit Add-On 20-Pos Crucible Shuttle Loader/Sample Carousel SN ° 3131
625-711-470	Kit Add-On Autocleaner O/N/H
625-711-472	Autocleaner Upgrade Kit, SN ≈3083
625-712-180	Ar TC Cell Upgrade Kit
625-712-182	Kit Variable Speed Cabinet Fan, SN 3121-3419
625-712-184	Kit Variable Speed Cabinet Fan, SN 3120DN REV G
625-712-186	Kit Variable Speed Cabinet Fan, SN 3120DN REV F

PRINTER KITS

601-480-110	Dot Matrix Printer Kit (USB)
621-453-110	Deskjet Printer Kit

RC612

259-063UPGR	Software Upgrade
620-400-210	Autoloader Add-On Kit
625-507	Incoming Gas Purifier
625-510-622	Autoloader to Manual Conversion

NOTE: Please visit www.lecosoftware.com to download Cornerstone brand software upgrades. A valid Registration ID is required.

LECO Upgrades and Options

HIGH PURITY GAS REGULATORS

633-103-359 In-line Gas Regulator

Oxygen		Inert Gas		Air	
<i>Cylinder Connection</i>	<i>Part Number</i>	<i>Cylinder Connection</i>	<i>Part Number</i>	<i>Cylinder Connection</i>	<i>Part Number</i>
CGA 540	633-103-356	CGA 580	633-103-358	CGA 346	633-103-354
DIN 9	633-103-362	DIN 10	633-103-364	DIN 13	633-103-360

CO ₂		Hydrogen		UHP Inert Gas*	
<i>Cylinder Connection</i>	<i>Part Number</i>	<i>Cylinder Connection</i>	<i>Part Number</i>	<i>Cylinder Connection</i>	<i>Part Number</i>
CGA 320	633-103-355	CGA 350	633-103-357	CGA580	633-103-353
DIN 6	633-103-361	DIN 1	633-103-363	N/A	N/A

*Recommended for RHEN602

NOTE: For additional information, refer to the [Gas Regulator flyer, 209-222](#)

LECO Conversion Kits

CS230 SERIES

621-578	CS230 to CS230CL
621-836	S230 to S230DR
621-837	S230 to CS230
621-838	S230 to CS230CL
621-839	S230 to CS230CH
621-840	S230SH to S230DR
621-841	S230SH to CS230SH
621-842	S230SH to CS230CSH
621-843	C230 to CS230
621-844	C230 to CS230SH
621-845	C230CL to C230CLH
621-846	C230CL to CS230CL
621-847	C230CH to C230CLH
621-848	C230CH to CS230CH
621-849	C230CH to CS230CSH
621-850	CS230 to CS230SH
621-851	CS230CH to CS230CSH
621-852	CS230SH to CS230CSH

CS744 SERIES

619-592-740	C/CS744 to C/CS744-P
619-592-742	S744 to S744-PS
619-592-744	S744-PS to CS744-P
619-592-746	C744 to CS744
619-592-748	S744 to CS744

CS844 SERIES

619-592-912	S844 to CS844
619-592-910	C844 to CS844

DH603 SERIES

625-515	DH603 to DH603D
---------	-----------------

ON736 SERIES

625-712-130	N736 to N736-P; ON736 to ON736-P
625-712-132	N736 to ON736; N736-P to ON736-P
625-712-134	N736 to ON736-P
625-712-136-HAZ	O736 to O736-P
625-712-138	O736 to ON736
625-712-140-HAZ	O736 to ON736-P
625-712-142	O736-P to ON736-P

ONH836 SERIES

625-712-102	H836 to ONH836
625-712-104	N836 to ONH836
625-712-106	NH836 to ONH836
625-712-108	O836 to ONH836
625-712-110	OH836 to ONH836
625-712-112	ON836 to ONH836
625-712-114	O836 to ON836
625-712-116	O836 to OH836
625-712-118	N836 to ON836
625-712-120	H836 to OH836
625-712-122	N836 to NH836
625-712-124	H836 to NH836

- Unit must be returned to the LECO Global Support Center for installation
- Unit must be in working order prior to shipment to LECO
- Customer is responsible for shipping charge both to and from LECO
- Conversion kit cost does not include labor
- Conversion process includes Preventive Maintenance service
- Please call 269-985-5497 or contact your local LECO Sales Engineer for more information

This page intentionally blank.

Ordering Information/General Terms

Ordering, Customer Assistance, and all Other Inquiries



Order Online *NOTE: Available to USA customers only.*

- Visit www.lecodirect.com to register for an account



Phone

800-292-6141 or
269-985-5496



Email

sales@leco.com
*for purchase orders or
pricing information*

info@leco.com
for general inquiries



Fax

269-982-8987



Mail

LECO Corporation
3000 Lakeview Avenue
St. Joseph, MI 49085

VISA, Mastercard, and American Express Accepted.



Terms and Conditions

- Terms: Net 30 days with approved credit.
- Prices shown are US dollars, F.O.B. St. Joseph, Michigan. Freight charges are prepaid and added to the invoice.
- Sales taxes will be added where applicable.
- Returns must be approved in advance; re-stocking fee may be applied. Return Material Authorization (RMA) is required for all returns. Contact LECO for RMA information.
- Disclaimer: LECO products are intended for use by professional laboratory personnel who are familiar with the handling of these materials. Our products are not for use in household, drug, medical, or cosmetic applications. The buyer and/or user assumes full responsibility for the safe handling, storage, application, and proper disposal of all products ordered from this catalog.
- Complete terms and conditions are included with quotations and invoices.
- **Prices, part numbers, and availability are subject to change without notice.**

This page intentionally blank.



3000 Lakeview Avenue | St. Joseph, MI 49085 | 800-292-6141 | Phone: 269-985-5496
info@leco.com | www.leco.com | ISO-9001:2015 Q-994 | LECO is a registered trademark of LECO Corporation.

LECO Corporation

LECO

EMPOWERING RESULTS

© 2021 LECO Corporation

Form No. 203-959

5/21-REV10

Supplies for Organic Analysis



LECO
EMPOWERING RESULTS

This page intentionally blank.

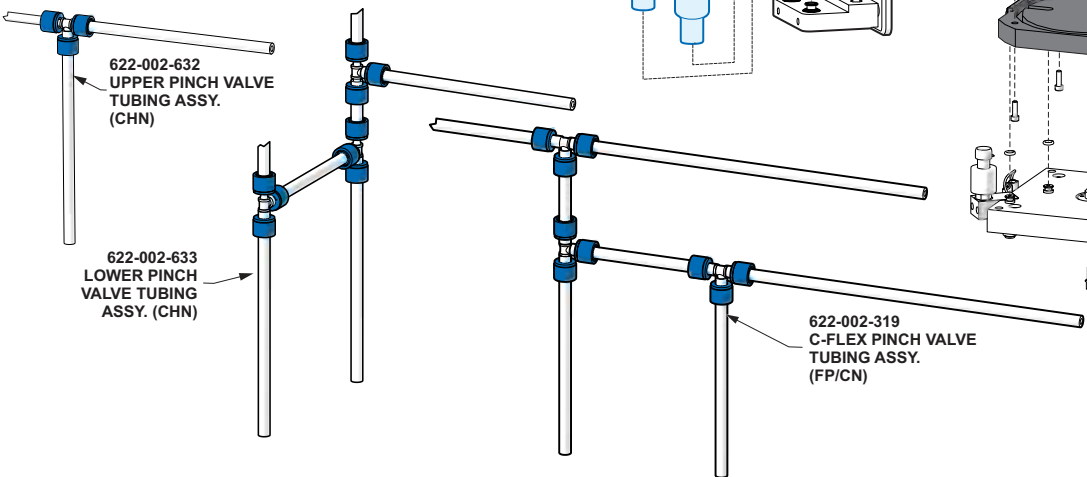
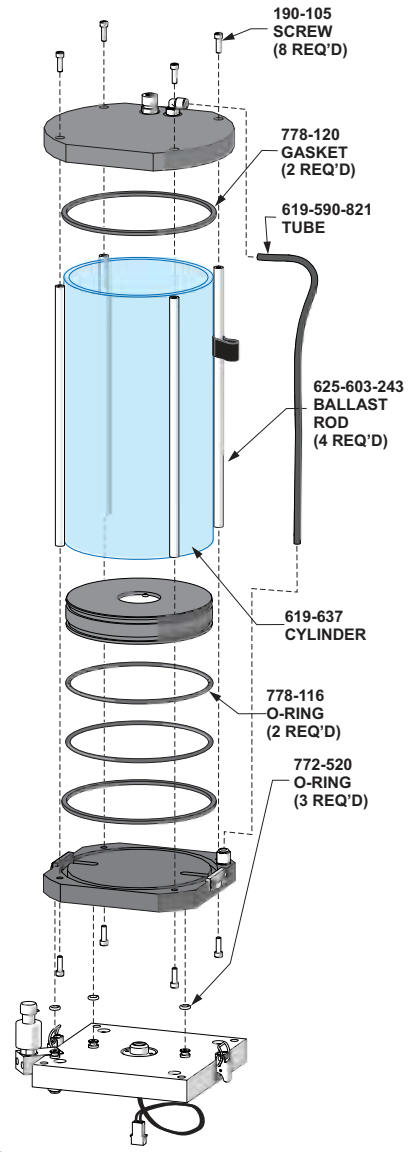
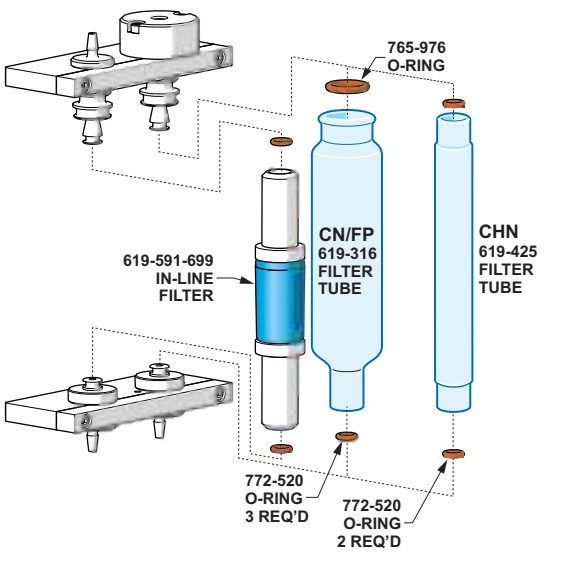
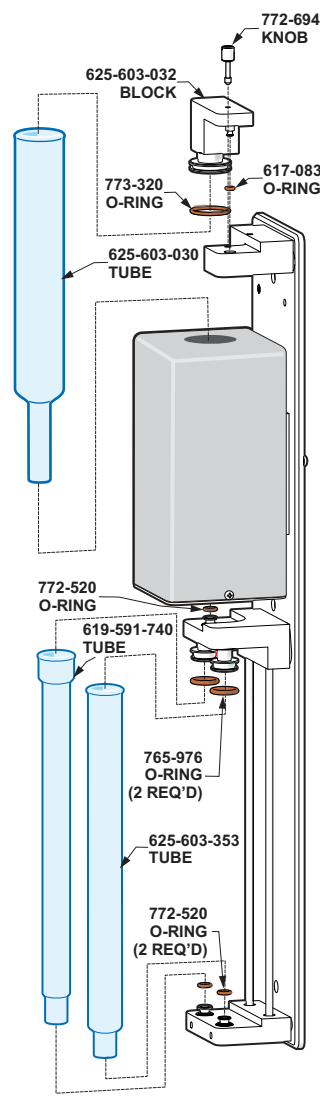
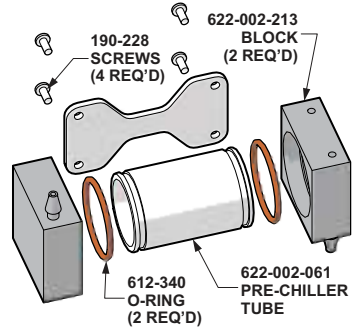
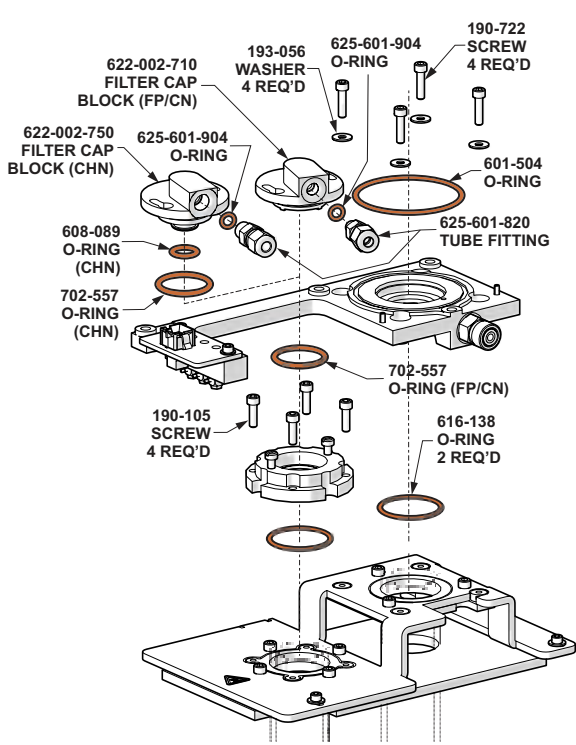
Table of Contents

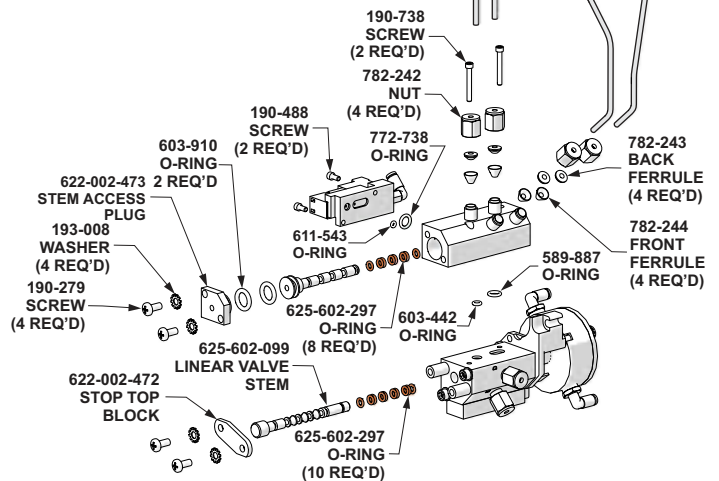
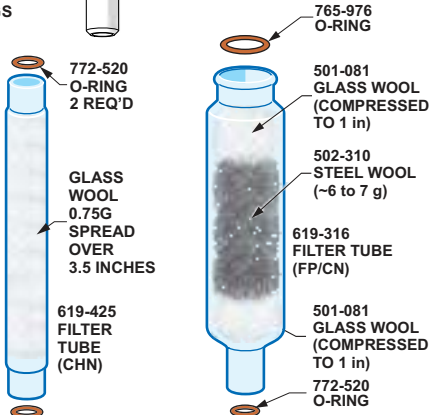
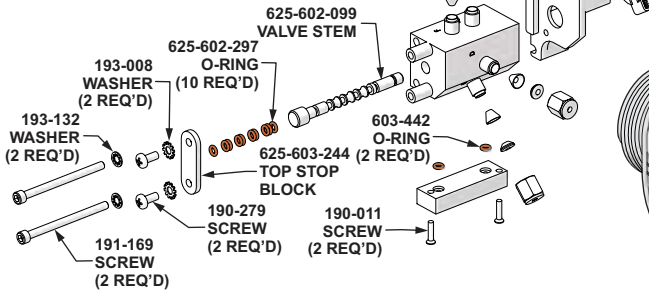
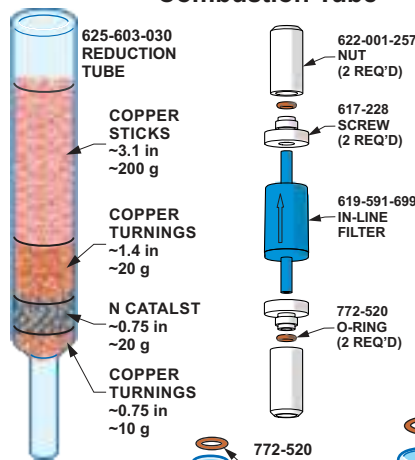
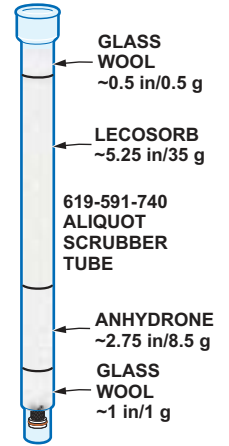
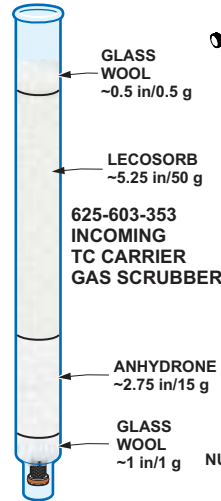
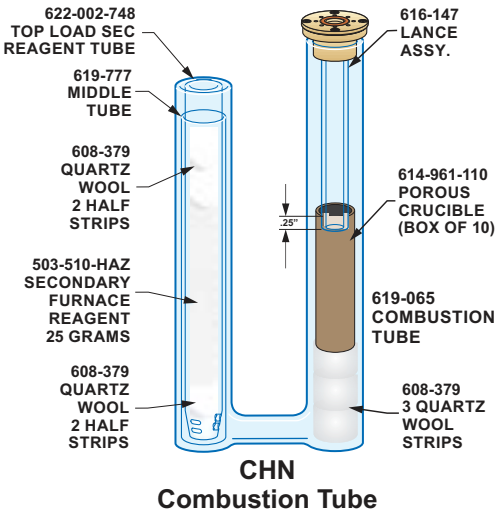
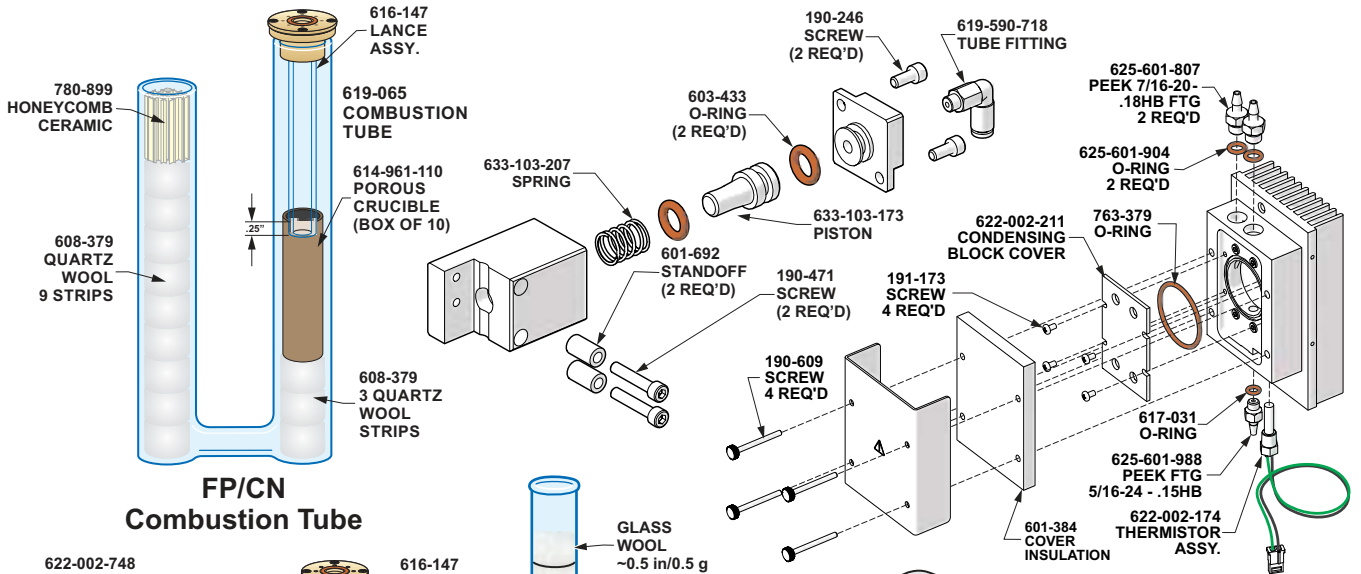
Released May 4, 2021

828 Series.....	4
928 Series.....	7
TruSpec Micro.....	10
Micro Oxygen Add-On Module	13
SC832 Series	15
TGA801	17
TGM800	19
AC600	20
AC500	22
AF700.....	24
Ordering Information	26

REFERENCE MATERIALS AND STANDARDS

Current part numbers and values for LECO Reference Materials and Standards (209-296) can be found at <https://www.leco.com/consumables>





GENERAL COMBUSTION SUPPLIES

501-171-HAZ	Anhydron 454 g (1 lb.) bottle
502-973	Copper Stick, Deoxidized, 200 g
502-995	Copper Turnings, Degassed, 60 g
501-081	Glass Wool 454 g (1 lb.) box
763-265	Glass Wool 227 g (0.5 lb.) package
502-174-HAZ	Lecosorb 500 g bottle
502-049	N-Catalyst 50 g bottle
608-379	Quartz Wool Strips 10/pk
502-310	Steel Wool 454 g (1 lb.)
503-510-HAZ	Secondary Furnace Reagent, 100 g
622-002-319	Ballast C-Flex Replacement Assy (FP/CN models)
622-002-632	Upper Pinch Valve Tubing Assy (CHN model)
622-002-633	Lower Pinch Valve Tubing Assy (CHN model)

CAPSULES AND CRUCIBLES

502-338	Gel Capsule, Small 400/pkg
502-382	Gel Capsule, Medium 400/pkg
502-810	Gel Capsule, Large 400/pkg
614-961-110	Porous Crucibles for solids 10/pk
617-605	Porous Crucibles for liquids 10/pk
502-040	Tin Capsules, Small 100/bottle
502-040-100	Tin Capsules, Small 1000/bottle
502-167	Tin Capsules, Medium 100/bottle
502-825	Tin Capsules, Large 50/bottle
502-186-200	Tin Foil Cups, Small 100/bottle
502-186-100	Tin Foil Cups, Small 1000/bottle
502-397	Tin Foil Cups, Large 100/bottle
502-397-400	Tin Foil Cups, Large 400/bottle

OPERATION ACCESSORIES

502-007	Tube Cleaner
601-981	Wire Brush
616-152	Crucible Extractor Tool
775-306	Secondary Filter, 10 micron
619-591-699	Filter In-Line, 0.1 micron
502-023	Funnel Quick Disc
778-321	Lance Extraction Tool
502-213	Leak Detection Solution
762-515	O-ring Tool - Removal
616-513	O-ring Tool - Installation
604-398	Sample Cup Holder, Large
604-373	Sample Cup Holder, Small
778-405	10-Sample Storage Block
501-614	Spatula
619-180-110	Stackable Carousel Assy
625-603-404	Tube Packing Tool
502-028	Tweezers
604-378	Tweezers, Curved (SST)
501-241	Vacuum Grease

COMBUSTION TUBES AND GLASSWARE

619-316	Glass Filter Tube (wide mouth top, small bottom) requires one (1) 765-976 Top O-ring and one (1) 772-520 Bottom O-ring for sealing; (FP/CN models)
619-425	Straight Filter Glass Tube (CHN model)
780-899	Honeycomb Ceramic Stop
619-065	Combustion Tube
619-591-740	Aliquot Scrubber Tube
625-603-030	Reduction Tube
616-146	Lance Tube
625-603-353	Incoming TC Carrier Gas Scrubber Tube
622-002-748	Top Load Secondary Furnace Reagent Tube (CHN model)
619-777	Middle Directing Tube (CHN model)

MAINTENANCE PARTS KITS

104-196	CN/FP828 Maintenance Parts Kit
104-206	CHN828 Maintenance Parts Kit

5K CONSUMABLE PACKS

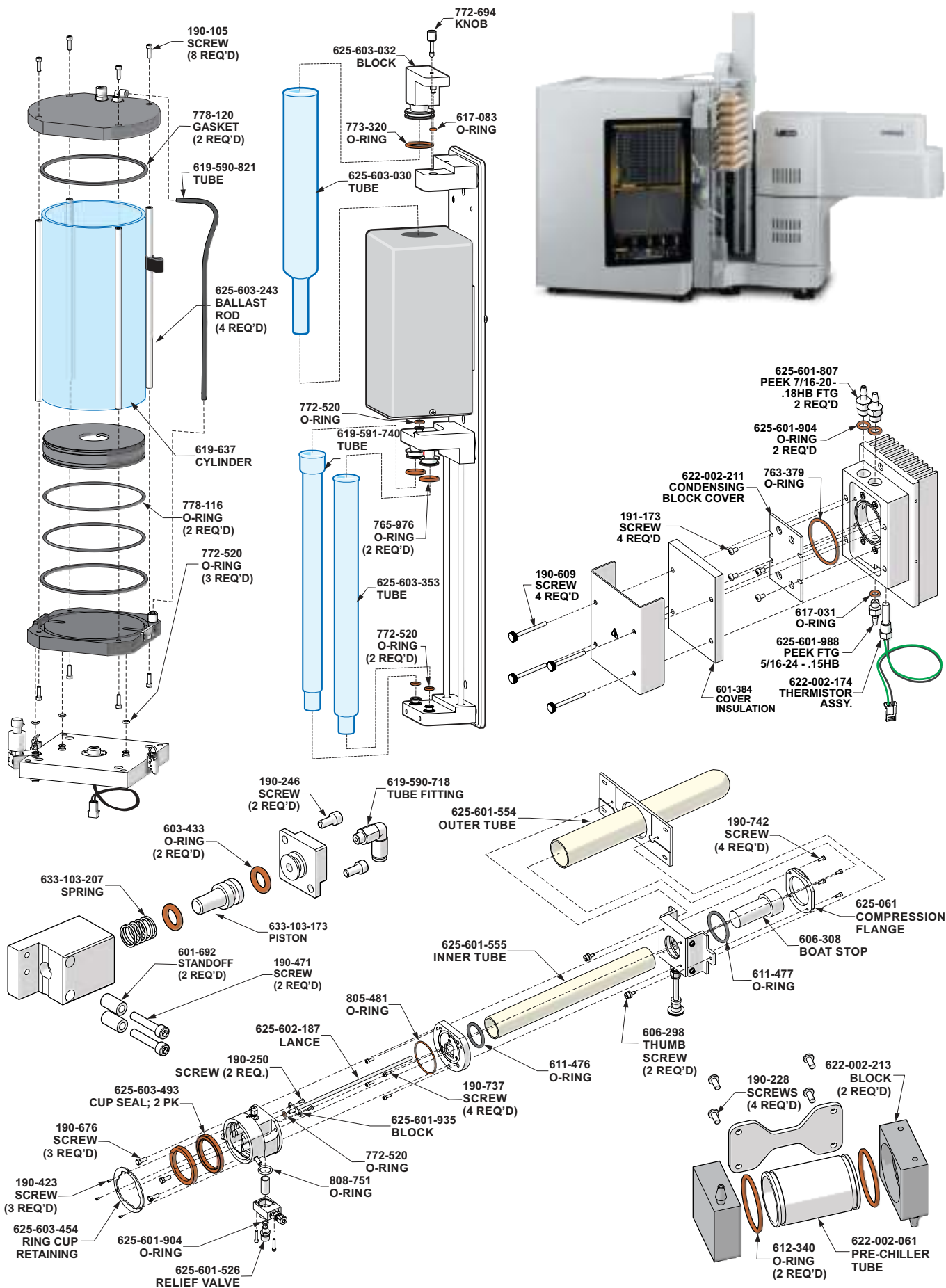
502-956-HAZ	828 Series Small Tin Foil Cup
502-957-HAZ	828 Series Large Tin Foil Cup
502-958-HAZ	828 Series Medium Gel Cap
502-959-HAZ	828 Series Small Gel Cap
502-960-HAZ	828 Series Small Tin Cap

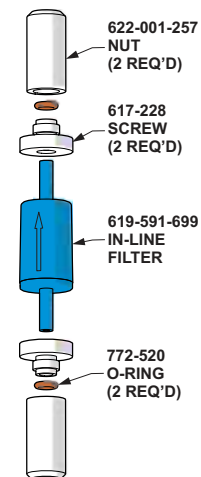
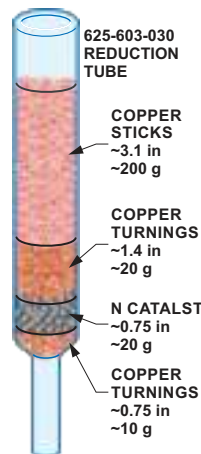
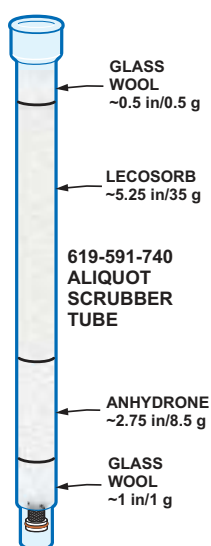
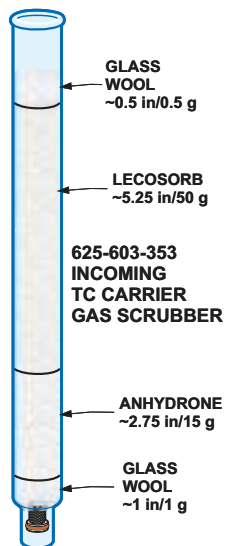
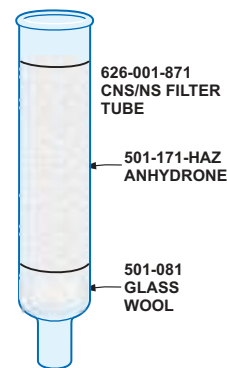
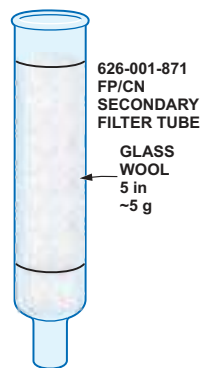
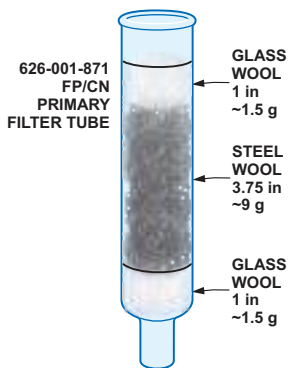
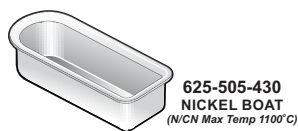
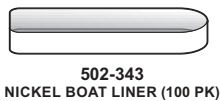
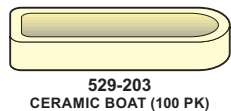
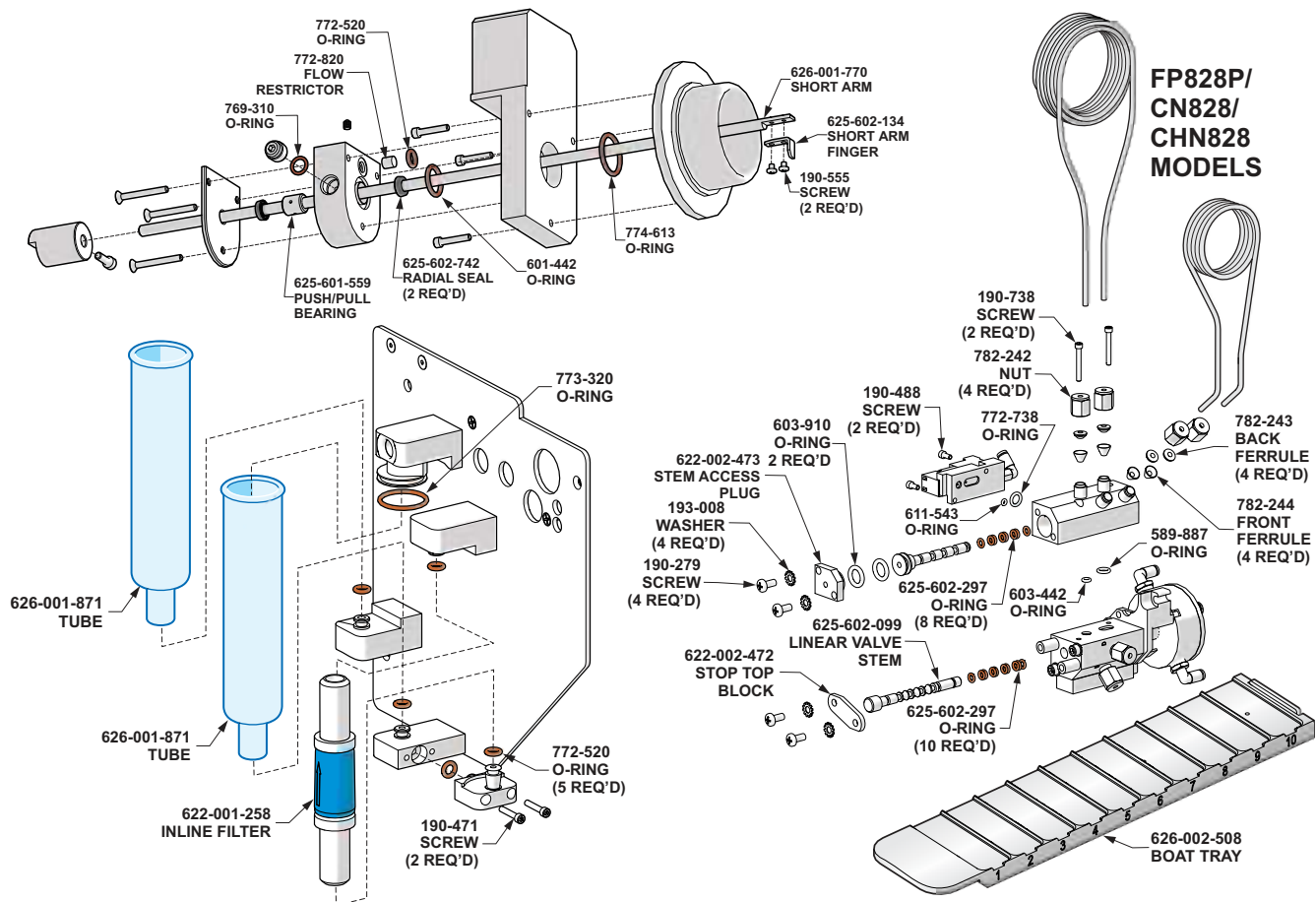
1K CONSUMABLE PACKS

502-951-HAZ	828 Series Small Tin Foil Cup
502-952-HAZ	828 Series Large Tin Foil Cup
502-953-HAZ	828 Series Small Gel Cap
502-954-HAZ	828 Series Medium Gel Cap
502-955-HAZ	828 Series Small Tin Cap

REFERENCE MATERIALS AND STANDARDS

Current part numbers and values for LECO Reference Materials and Standards (209-296) can be found at <https://www.leco.com/consumables>







Consumables & Spare Parts

GENERAL COMBUSTION SUPPLIES

501-171-HAZ	Anhydron 454 g (1 lb) bottle
502-973	Copper Stick Deoxidized, 200 g
502-995	Copper turnings Degassed, 60 g
501-081	Glass Wool 454 g (1 lb) box
626-001-871	Furnace Reagent Tube (primary/secondary filter tube) (O-ring top 773-320, O-ring bottom 772-520)
625-603-030	Reduction Tube (O-ring top 773-320, O-ring bottom 772-520)
775-306	Screen Filter
619-591-699	Filter In-Line 0.01 Micron Disposable
502-174-HAZ	Lecosorb 500 g bottle
502-049	N-Catalyst 50 g bottle
502-310	Steel Wool 454 g (1 lb)
606-308	Boat Stop, Ceramic
501-426	ComAid™ for Solids 454 g (1 lb) bottle
501-427	ComAid™ for Liquids 454 g (1 lb) bottle
528-203-250	Combustion Boat - Ceramic 250/pkg
625-505-430	Nickel Boat (50/pkg)
502-343	Nickel Boat Liner 100/pkg
625-603-331	Pinch Valve Replacement Tubing Assembly
601-691	C-Flex Tubing (25 ft)
625-602-297	O-ring for Aliquot Doser Stem
611-476	O-ring Inner Combustion Tube
611-477	O-ring Outer Combustion Tube
772-520	O-ring Lance
625-601-515	Combustion Tube Insulation
625-601-554	Outer Combustion Tube
625-601-555	Inner Combustion Tube
625-602-187	Lance Tube
625-525-129	Heating Element Assembly w/Clamp and Lugs

OPERATION ACCESSORIES

761-929	Crucible Tongs
626-002-644	Heating Element Connector Tool
502-007	Tube Cleaner
625-603-399	Rectangular Foam Swab 100/pk
501-241	Vacuum Grease
502-213	Leak Detect Solution
501-614	Spatula
501-062	Boat Puller
502-023	Funnel
616-513	O-ring Installation Tool for Aliquot Doser Stem
606-403	Tube Brush

MAINTENANCE PARTS KITS

104-194	CN/FP928 Maintenance Parts Kit
104-203	CNS928 Maintenance Parts Kit

5K CONSUMABLE PACKS

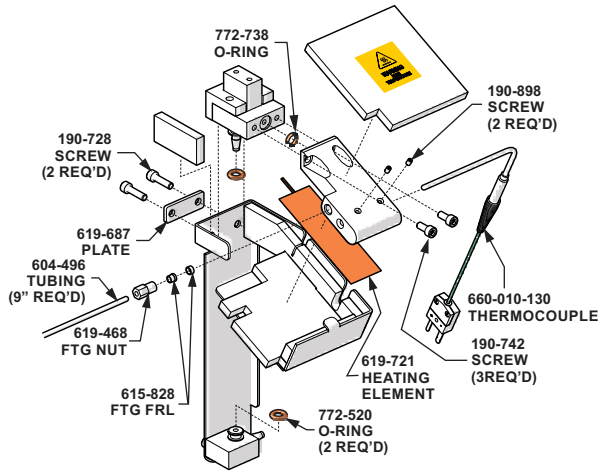
502-726-HAZ	FP/CN928 Solid
502-727-HAZ	FP/CN928 Liquid
502-729-HAZ	CNS/NS928

1K CONSUMABLE PACKS

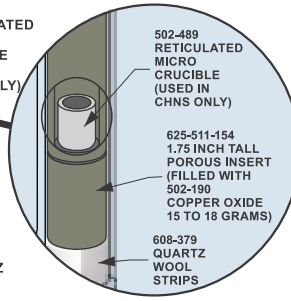
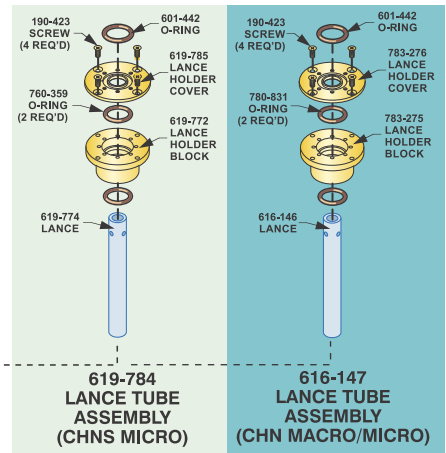
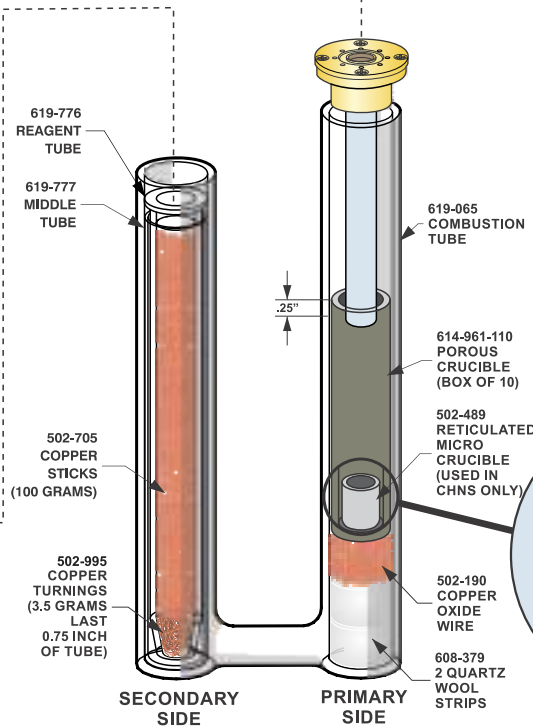
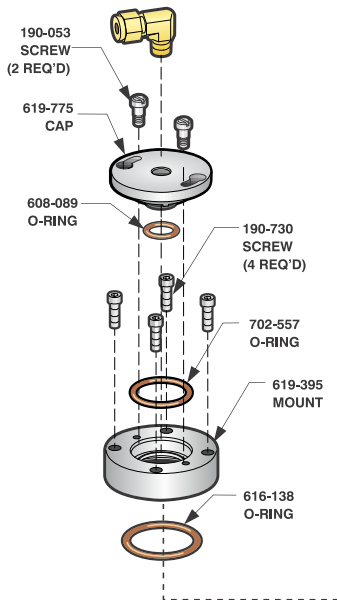
502-724-HAZ	FP/CN928 Solid
502-725-HAZ	FP/CN928 Liquid
502-728-HAZ	CNS/NS928

REFERENCE MATERIALS AND STANDARDS

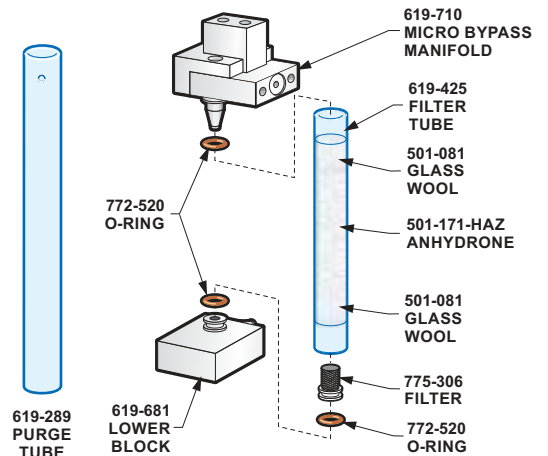
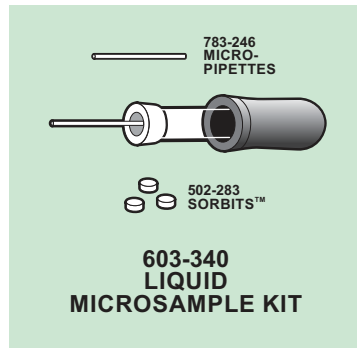
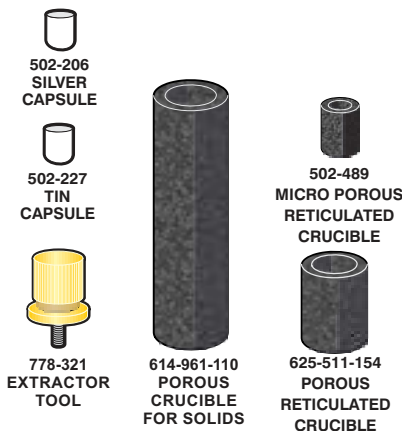
Current part numbers and values for LECO Reference Materials and Standards (209-296) can be found at <https://www.leco.com/consumables>

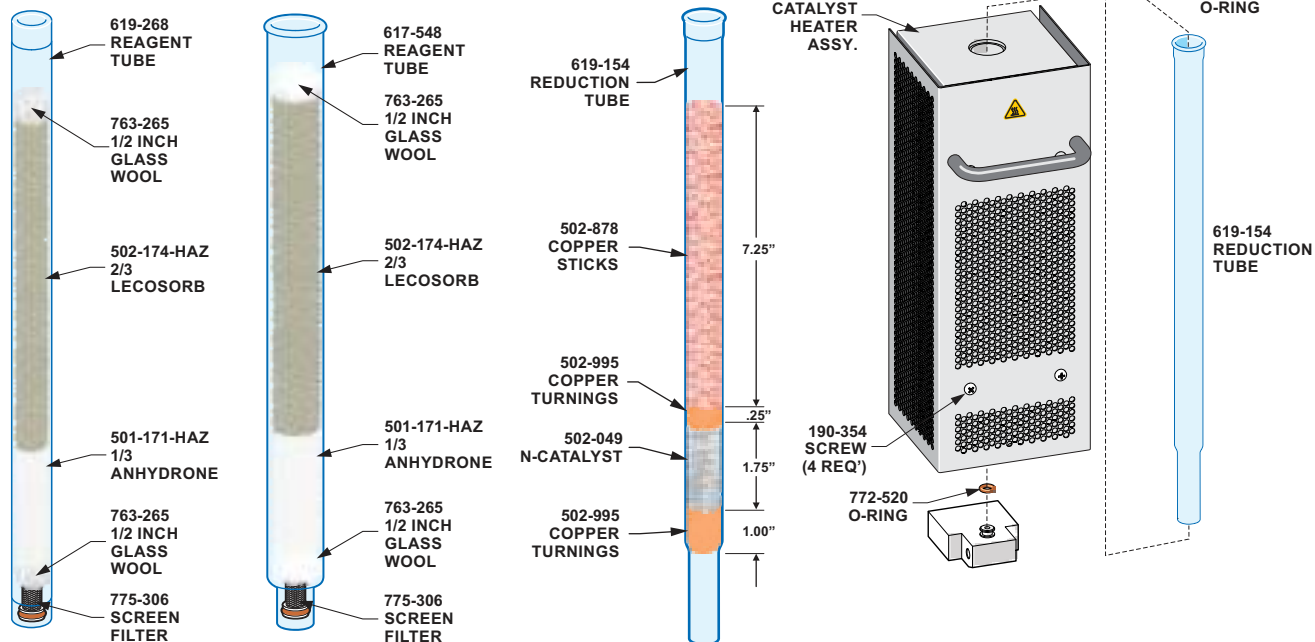
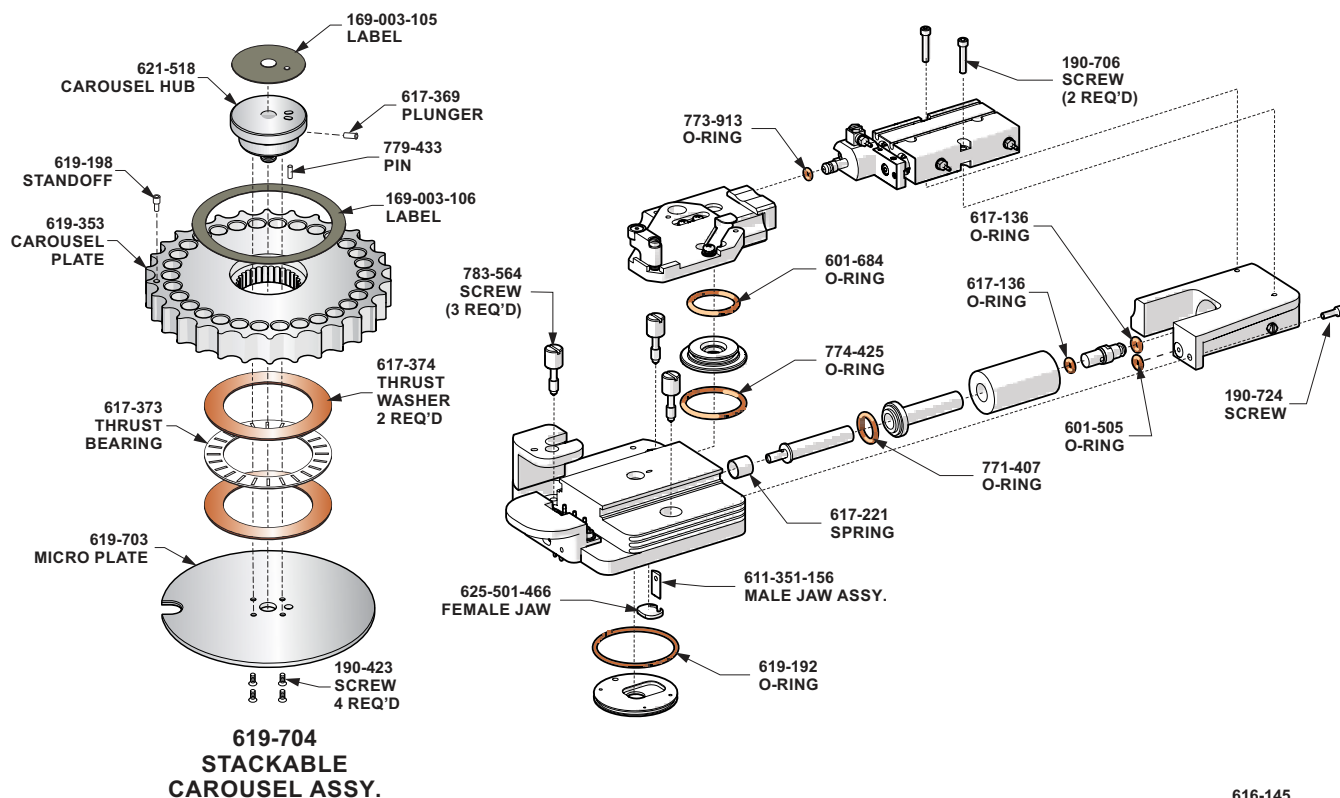


TruSpec Micro



ALTERNATIVE PRIMARY FURNACE PACKING







Consumables & Spare Parts

GENERAL COMBUSTION SUPPLIES

501-171-HAZ	Anhydron 454 g (1 lb.) bottle
502-190	Copper Oxide Wire 100 g bottle
502-705	Copper Sticks 100 g ampule
502-878	Copper Sticks 100 g bottle
502-995	Copper Turnings 60 g bottle
501-081	Glass Wool 454 g (1 lb.) box
763-265	Glass Wool 227 g (0.5 lb.) package
502-174-HAZ	Lecosorb 500 g bottle
502-644	Micro Furnace Reagent
502-049	N-Catalyst 50 g bottle
608-379	Quartz Wool Strips 10/pk
502-301	Tungsten Trioxide (125 g)

CAPSULES AND CRUCIBLES

614-961-110	Porous Crucibles for solids 10/pk (use only with 614-962 lance)
502-293	Silver Capsules for Micro Analysis 500/bottle
502-206	Silver Capsules for Micro Analysis 1000/bottle
502-227	Tin Capsules for Micro Analysis 500/bottle
502-489	Reticulated Micro Crucibles 10/pk (for CHNS only)
625-511-154	Porous Reticulated Crucibles (small) 5/pk

OPERATION ACCESSORIES

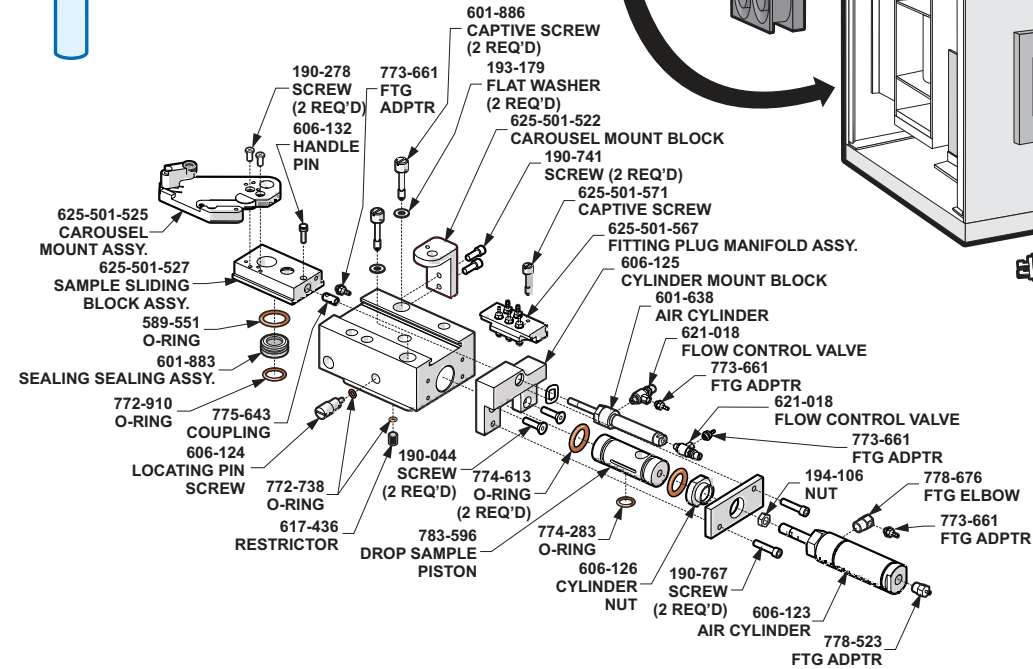
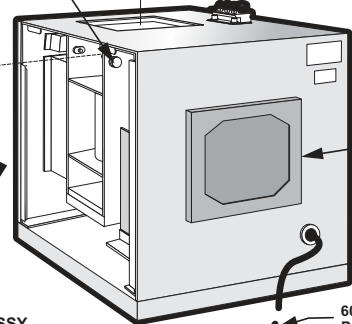
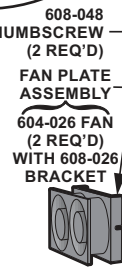
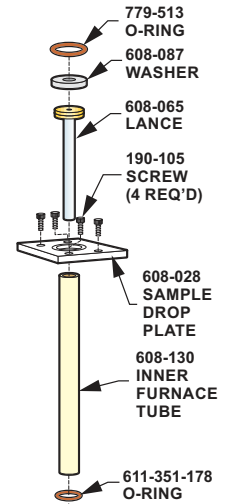
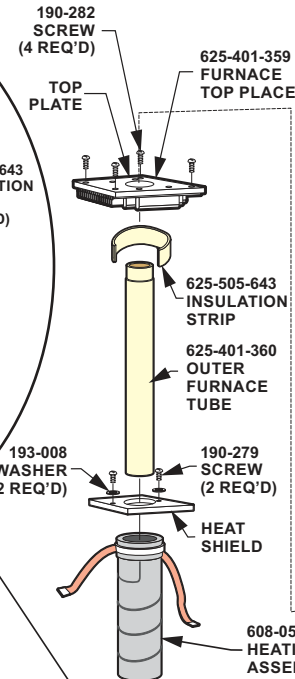
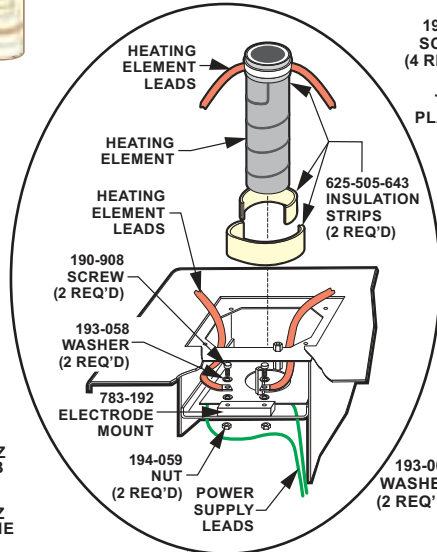
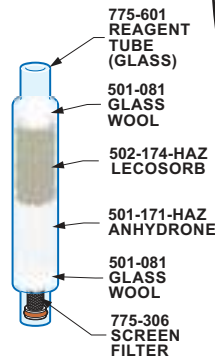
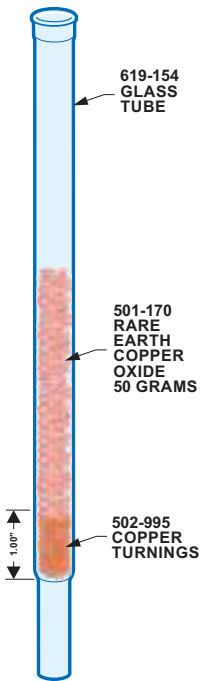
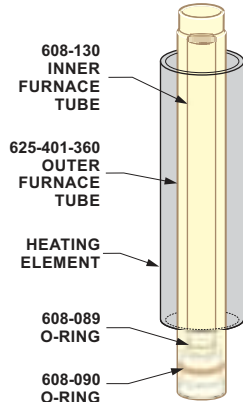
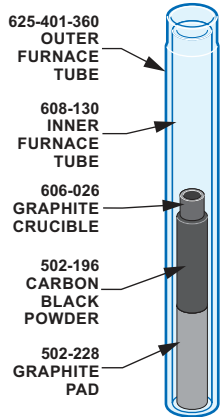
502-005	Brush
601-981	Wire Brush
616-152	Crucible Extractor Tool
775-306	Secondary Filter, 10 micron
775-307	Filter Tool, Thumbscrew
502-023	Funnel Quick Disc
778-321	Lance Extraction Tool
502-213	Leak Detection Solution
603-350	Tool O-ring Installation
762-515	Tool O-ring Removal
604-398	Sample Cup Holder, Large
604-373	Sample Cup Holder, Small
778-405	10-Sample Storage Block
501-614	Spatula
502-007	Tube Cleaner
502-028	Tweezers
604-378	Tweezers, Curved
501-241	Vacuum Grease
619-380	Vacuum Cleaner Attachment Assembly

COMBUSTION TUBES AND GLASSWARE

619-425	Micro In-Line Anhydron Tube
774-638	Reagent Tube, requires 772-520 O-rings for sealing
775-601	Reagent Tube, requires 772-520 O-rings for sealing
619-154	Reduction Tube, requires 601-442 O-rings for sealing

REFERENCE MATERIALS AND STANDARDS

Current part numbers and values for LECO Reference Materials and Standards (209-296) can be found at <https://www.leco.com/consumables>



Micro Oxygen Add-On Module



Consumables & Spare Parts

GENERAL COMBUSTION SUPPLIES

501-171-HAZ	Anhydron 454 g (1 lb.) bottle
501-170	Rare Earth Copper Oxide
502-196	Carbon Black 10 g bottle
502-878	Copper Sticks 100 g bottle
502-995	Copper Turnings 60 g bottle
501-081	Glass Wool 454 g (1 lb.) box
763-265	Glass Wool 227 g (0.5 lb.) package
606-026	Graphite Crucible 10/package
502-228	Graphite Pad 1 each
502-174-HAZ	Lecosorb 500 g bottle
601-963	Tin Capsule 1000/bottle (3.5 x 4 mm)
502-227	Tin Capsule 500/bottle (3.2 4 mm)

OPERATION ACCESSORIES

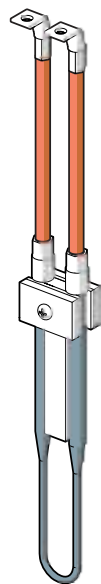
502-005	Brush
601-981	Wire Brush
775-306	Secondary Filter, 10 micron
502-213	Leak Detection Solution
603-350	Tool O-ring Installation
762-515	Tool O-ring Removal
608-135	Pyrolysis Tube Extractor Tool Assembly
604-398	Sample Cup Holder, Large
604-373	Sample Cup Holder, Small
778-405	10-Sample Storage Block
502-007	Tube Cleaner
502-028	Tweezers
604-378	Tweezers, Curved
501-241	Vacuum Grease
601-964	Micro Pliers
619-726	Micro Forceps
619-725	Micro Spatula

COMBUSTION TUBES AND GLASSWARE

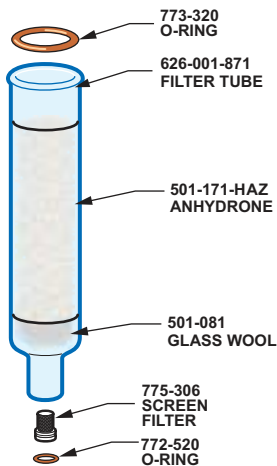
608-065	Graphite Lance
608-130	Inner Pyrolysis Tube, requires one (1) 608-089 O-ring
619-154	Oxygen Catalyst Heater Tube
625-401-360	Outer Pyrolysis Tube, requires one 608-090 O-ring, and one 608-091 O-ring
775-601	Reagent Tube, requires 772-520 O-rings for sealing

REFERENCE MATERIALS AND STANDARDS

Current part numbers and values for LECO Reference Materials and Standards (209-296) can be found at <https://www.leco.com/consumables>



625-525-129
HEATING ELEMENT

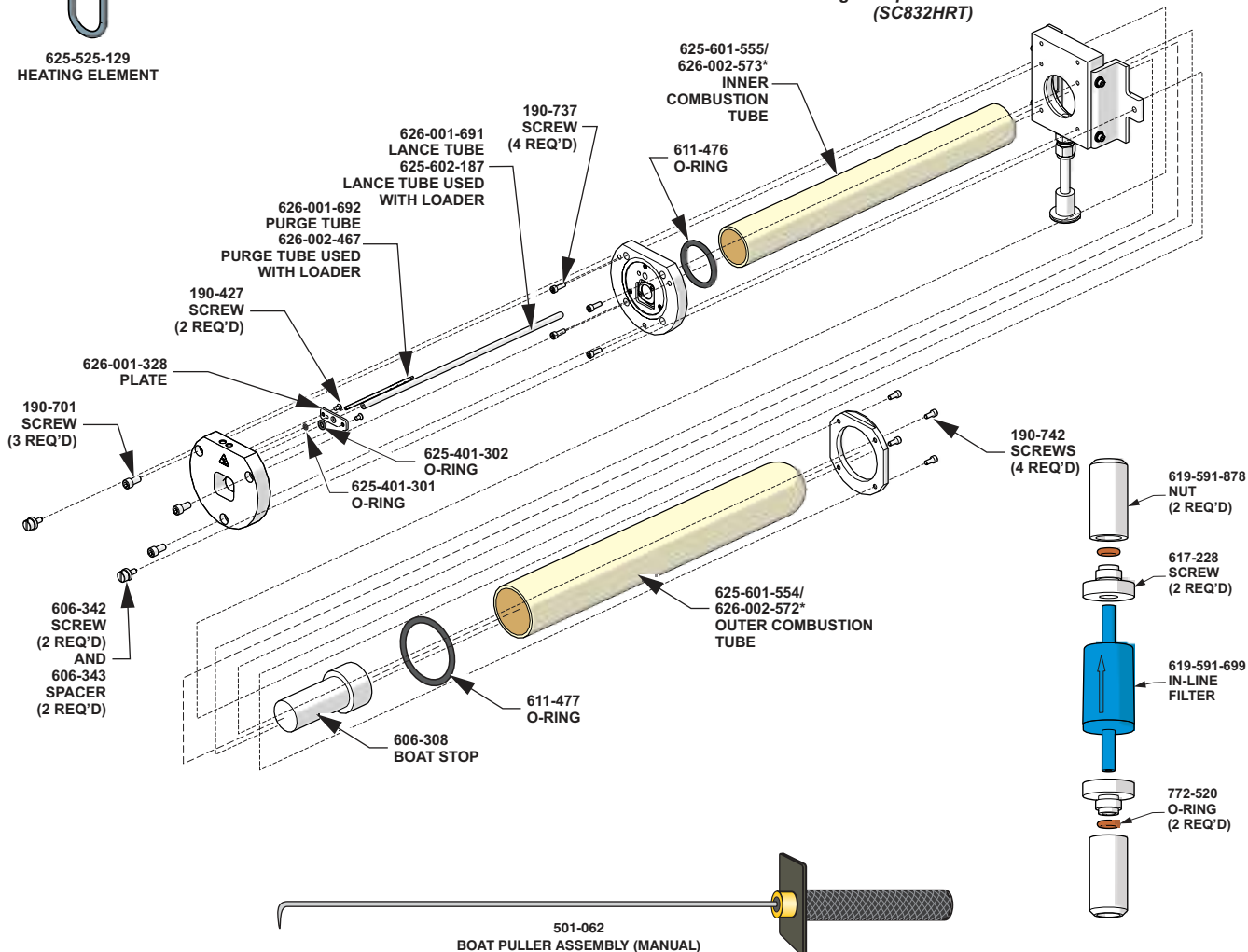


529-203
CERAMIC BOAT (100 PK)



761-929
CRUCIBLE TONGS

**Denotes part number for use with optional high temperature model (SC832HRT)*





Consumables & Spare Parts

GENERAL COMBUSTION SUPPLIES

- 501-171-HAZ Anhydrene 10-16 Mesh 1 lb.
- 501-426 COM-AID Solids and Powders 1 lb.
- 501-427 Com-Aid Liquids 1 lb.
- 502-321 Accelerator COM-CAT 250 g
- 529-203 Boat Combustion Zp P 100/package
- 528-203-250 Boat Crucible Zir 250/package
- 501-081 Wool Glass 1 lb.
- 763-265 Wool Glass 0.50 lb.
- 502-301 Tungsten Trioxide 125 g
- 769-608 Metal Trap Antimony 200 g,
Used in Halogen Scrubber Packing
- 769-610 F-CL Absrb -8 +20 mesh 225 g,
Used in Halogen Scrubber Packing

COMBUSTION TUBES, GLASSWARE, and HEATING ELEMENT

- 606-308 Stop Ceramic Stepped
- 626-001-691 Tube Lance Manual Load,
Requires 625-401-302 O-Ring
- 626-001-692 Tube Purge Sst Manual,
Requires 625-401-301 O-Ring
- 625-601-554 Tube Combustion Outer,
Requires 611-477 O-Ring
- 625-601-555 Tube Combustion Inner,
Requires 611-476 O-Ring
- 626-002-572 High Temperature Outer Combustion Tube
- 626-002-573 High Temperature Inner Combustion Tube
- 625-525-129 Heating Element Assy W/Clamp and Lugs
- 626-001-871 Tube Boros Reagent 1.38 OD 7.0
- 626-001-750 Pack O-Ring Spare SC/C/S832
Contains: (8) 772-520 O-Ring 108
(.250x .436x.093v); (4) 773-320
O-Ring 121 1.062x 1.248x.093v; (2) 611-476
O-Ring 326 (1.625x 1.999x.187a); (2) 611-477
O-Ring 330 (2.125x 2.499x.187a);
(2) 625-401-301 O-Ring 006
(.114x .184x .070a); (2) 625-401-302
O-Ring 107 (.206x .309x.103a)

OPERATION ACCESSORIES

- 501-062 Assy Boat Puller
- 761-929 Tong Crucible
- 501-614 Spatula Sample
- 503-032 Scoop Glass Accelerator Small
- 619-591-699 Filter In-Line 0.1 Micron Disposable*
- 502-007 Cleaner Tube 8 mm x 4 ft
- 501-241 Lub Grease Vacuum 5.3 oz
- 502-023 Funnel Quick Disc Tube
- 776-978 Scoop Glass 1.5 ml, Large
- 633-103-356 Kit Regulator Oxygen CGA 540
- 751-350-110 Kit Balance 4-plc Secura124-1s
- 611-844 Spatula Flat Spoon Sst
- 626-002-251 Kit Pump Rebuild

MAINTENANCE PARTS KITS

- 104-186 832 Series w/Autoloader
- 104-188 832HT Series
- 104-190 832HT Series w/Autoloader

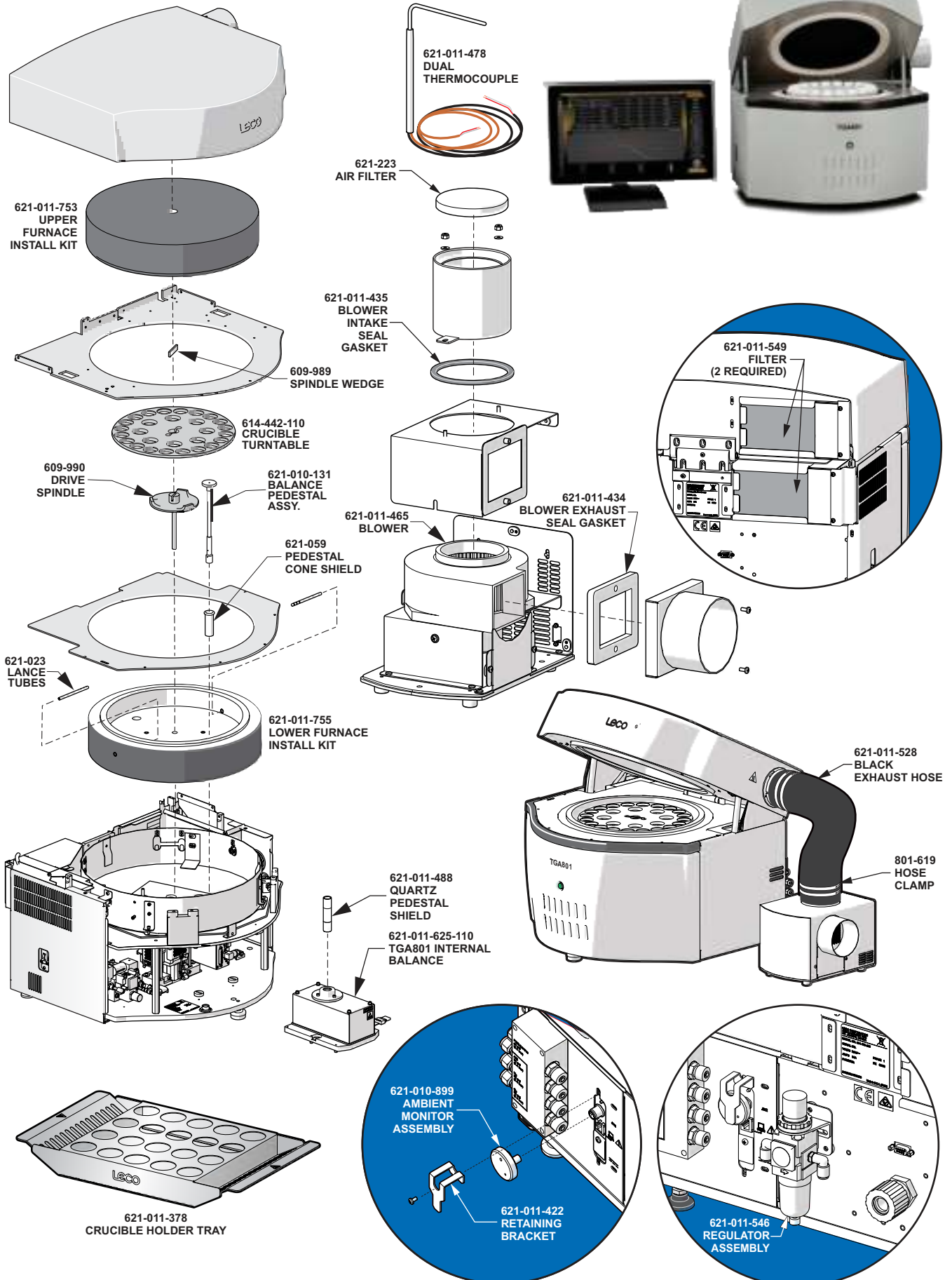
5K CONSUMABLE PACKS

- 502-771-HAZ 832 Series

REFERENCE MATERIALS AND STANDARDS

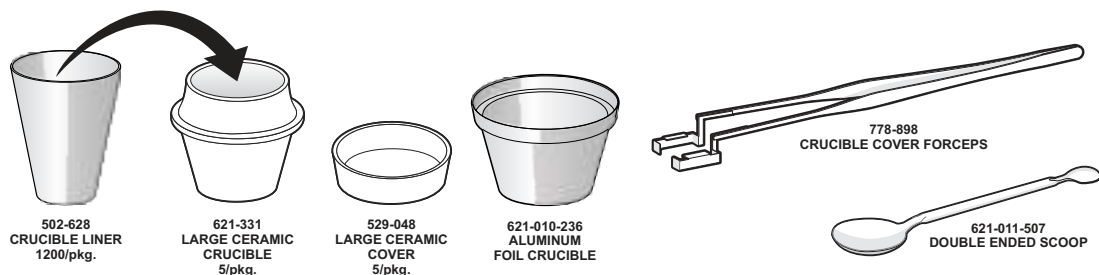
Current part numbers and values for LECO Reference Materials and Standards (209-296) can be found at <https://www.leco.com/consumables>

LECO Consumables & Spare Parts



TGA801

LECO Consumables & Spare Parts



OPTIONAL ACCESSORIES

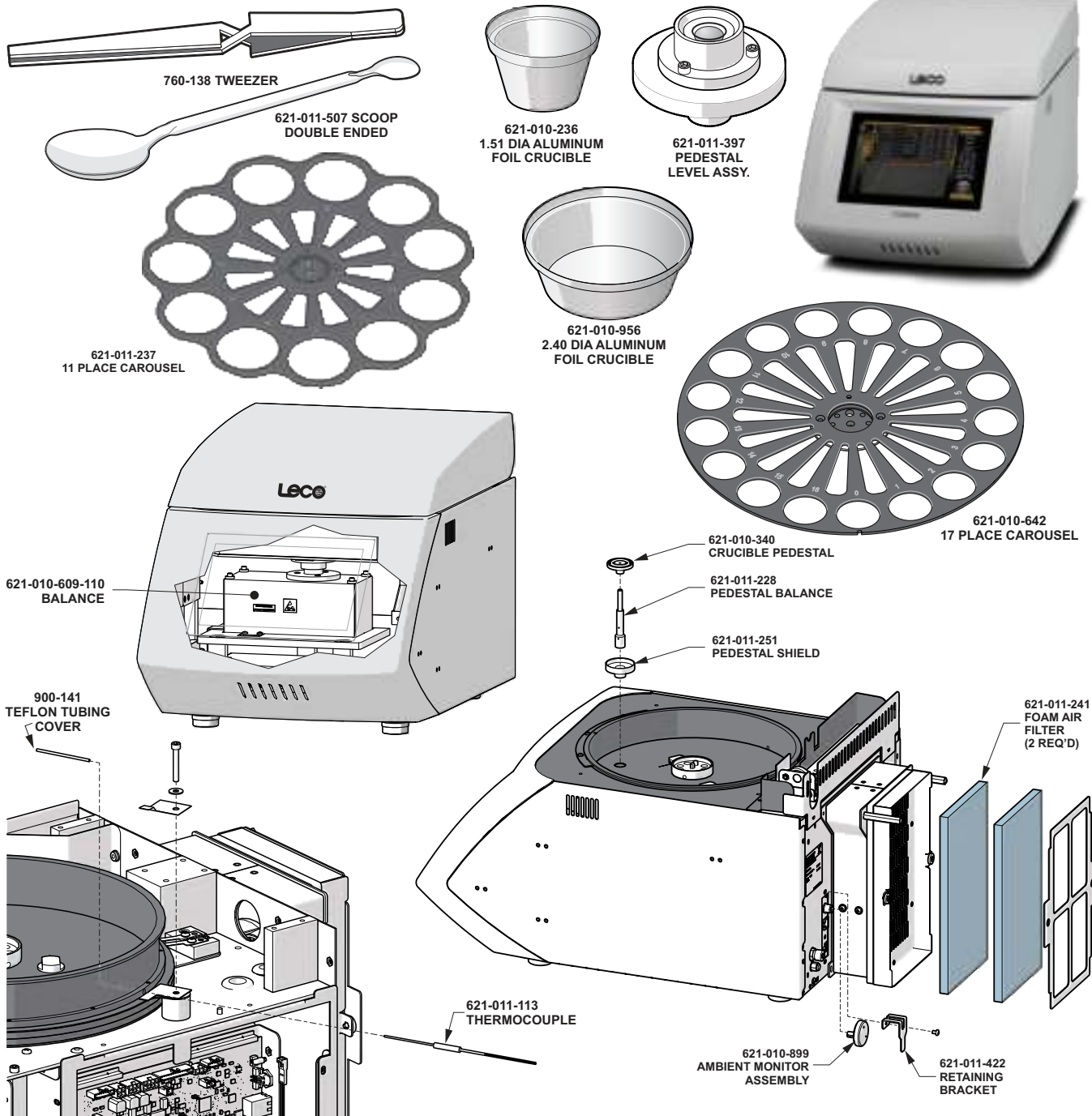
619-593-570 Scanner Bar Code Laser Bluetooth
619-995 Scanner Bar Code Laser USB
621-011-553 Weight Calibration 50 g

CRUCIBLES AND SPARE PARTS

621-331 Ceramic Crucible (5 pkg)
529-048 Ceramic Crucible Cover (5 pkg)
502-628 Crucible Foil Liner (1200/pkg)
621-010-236 Crucible Foil Alum 1.51 Dia 1000/pkg
621-011-378 Crucible Holder Tray
778-898 Crucible Cover Forceps
621-223 Filter Air .38t x 3.7 Dia.
621-011-549 Filter Air Foam 3.88 x 7.86 x .5 45 ppi Gry
619-591-699 Filter In-Line 0.1 Micron Disposable
621-011-507 Double Ended Scoop
614-442-110 Turntable Crucible Large Annealed

REFERENCE MATERIALS AND STANDARDS

Current part numbers and values for LECO Reference Materials and Standards (209-296) can be found at <https://www.leco.com/consumables>



OPTIONAL ACCESSORIES

621-011-553	Weight Calibration 50 g
619-995	Scanner Bar Code Laser USB
619-593-570	Scanner Bar Code Laser Bluetooth
621-011-560	Kit Oven Temp Verification
621-011-574	Kit Extension Exhaust TGM

CRUCIBLES AND SPARE PARTS

502-237	Wipes Foam 25/pk
621-011-240	Filter Air Foam 6.00 x 11.00 x 1.00 25 ppi
621-011-241	Filter Air Foam 6.00 x 11.00 x 1.00 10 ppi
621-011-103	Filter Air Foam 6.00 x 11.00 x 1.00 45 ppi
621-010-609-110	Assy Balance Complete TGM Tested
621-010-236	Crucible Foil Alum 1.51 dia 1000/pk
621-010-956	Crucible Foil Alum 2.40 dia 1000/pk

REFERENCE MATERIALS AND STANDARDS

Current part numbers and values for LECO Reference Materials and Standards (209-296) can be found at <https://www.leco.com/consumables>



Consumables & Spare Parts

GENERAL COMBUSTION SUPPLIES

774-649	Cleaning Brush Assembly
774-204	Crucible 10/pkg.
502-461	Cotton Thread Fuse, 10 cm, 375/pkg
502-462	Fuse Wire, 10 cm, 375/pkg
621-605-803	Fixed Wire Igniter Assembly, 5/pkg
502-460	Fixed Wire Igniter

OPERATION ACCESSORIES

501-241	Vacuum Grease (Silicone)
633-101-923	AC600 Vessel Holder
621-657	Filter Cartridge, 1 micron
621-605-744	Flush Adapter
762-515	O-Ring Removal Tool
776-978	Glass Scoop
502-051	Tweezers, Curved Fine Point
621-605-517	Vessel Lid Removal Tool
621-605-750	Vessel Tool Kit

OPTIONS

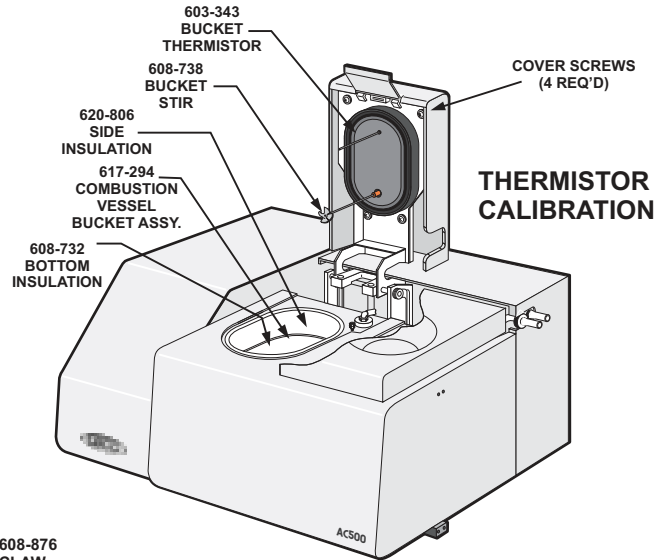
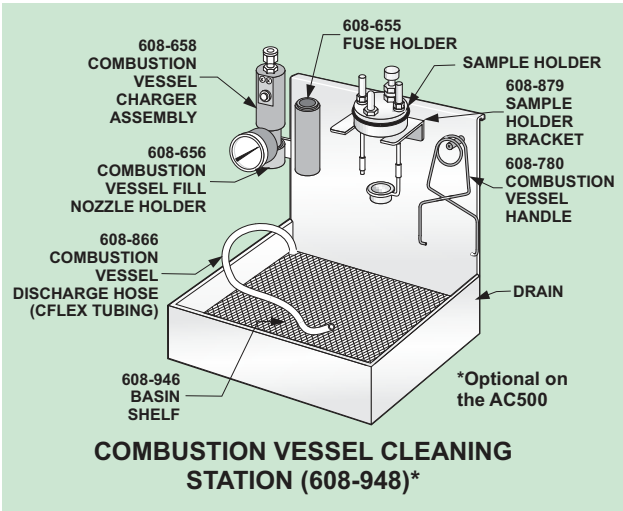
751-350-110	Electronic Balance
621-322	Pellet Press
621-606-160	External Chiller Kit, 120V, 60 Hz (sized for single AC600)
621-606-162	External Chiller Kit, 240V, 50 Hz (sized for single AC600)
621-606-164	External Chiller Kit, 120V, 60 Hz (sized for dual AC600)
621-606-166	External Chiller Kit, 240V, 50 Hz (sized for dual AC600)
633-103-354	Compressed Air Regulator
619-995	Bar Code Scanner USB
621-453-110	Deskjet Printer Kit
621-605-958	AC600 Prep Station
621-605-686	O-Ring Pack for Vessel
621-605-687	O-Ring Pack for Prep Station
621-605-979	Halogen Resistant Combustion Vessel II
621-605-978	Standard Combustion Vessel II

O-RINGS

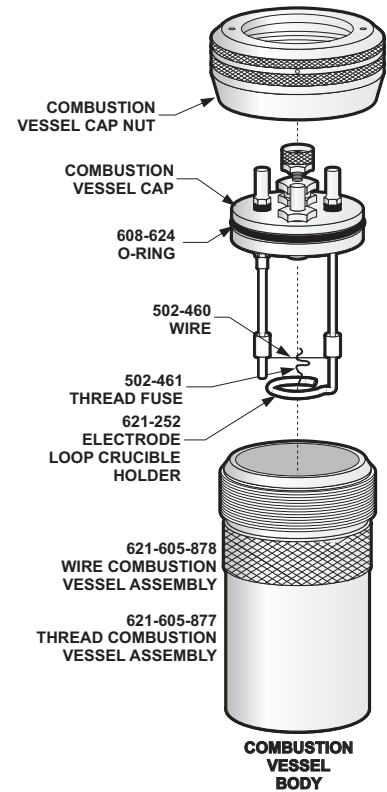
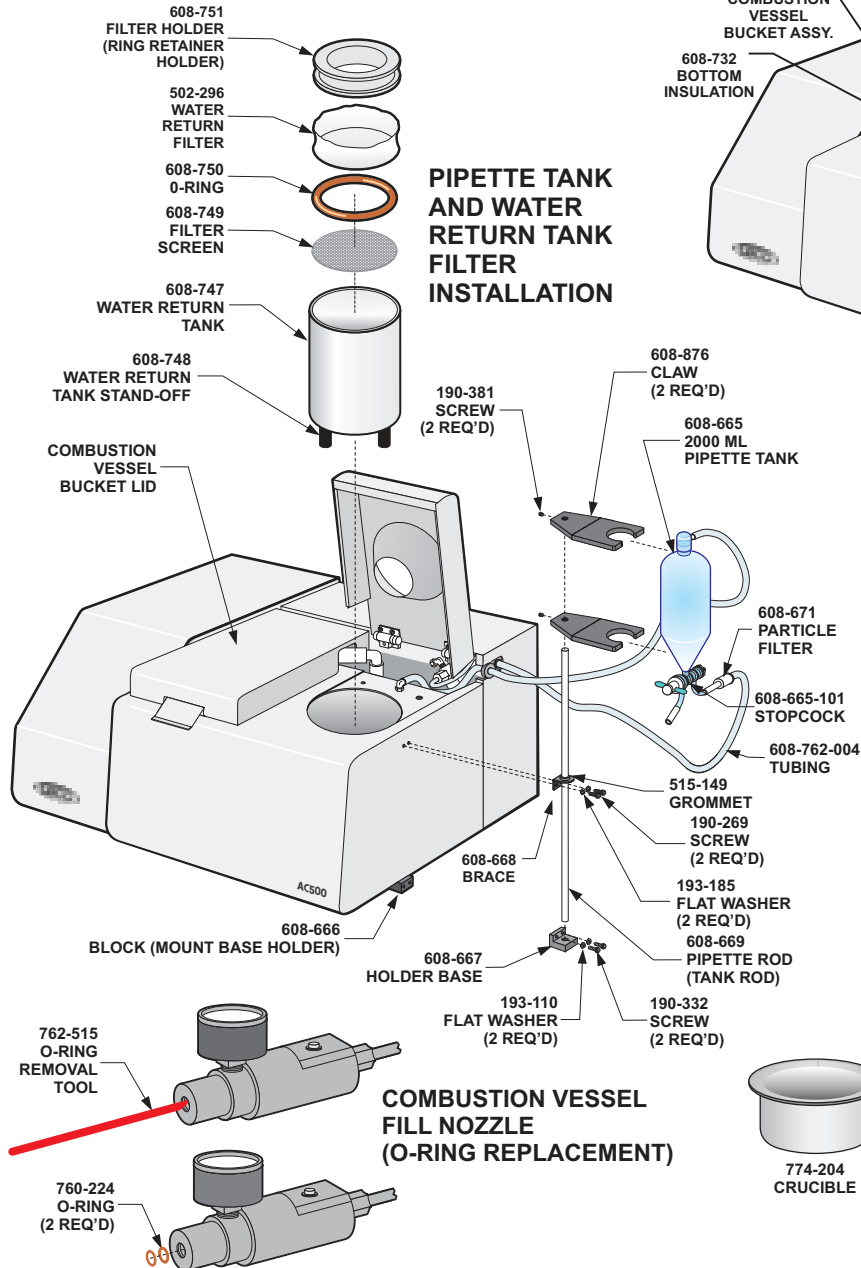
611-543	Prep Station Nipple Charge
621-605-560	Vessel Cap
621-605-664	Check Valve
621-605-973	Seal Insert Exhaust
772-738	Prep Station Valve Inserts
773-913	Electrode Post
776-562	Ceramic Washer
621-656-001	Water Filter Housing

REFERENCE MATERIALS AND STANDARDS

Current part numbers and values for LECO Reference Materials and Standards (209-296) can be found at <https://www.leco.com/consumables>



AC500





Consumables & Spare Parts

GENERAL COMBUSTION SUPPLIES

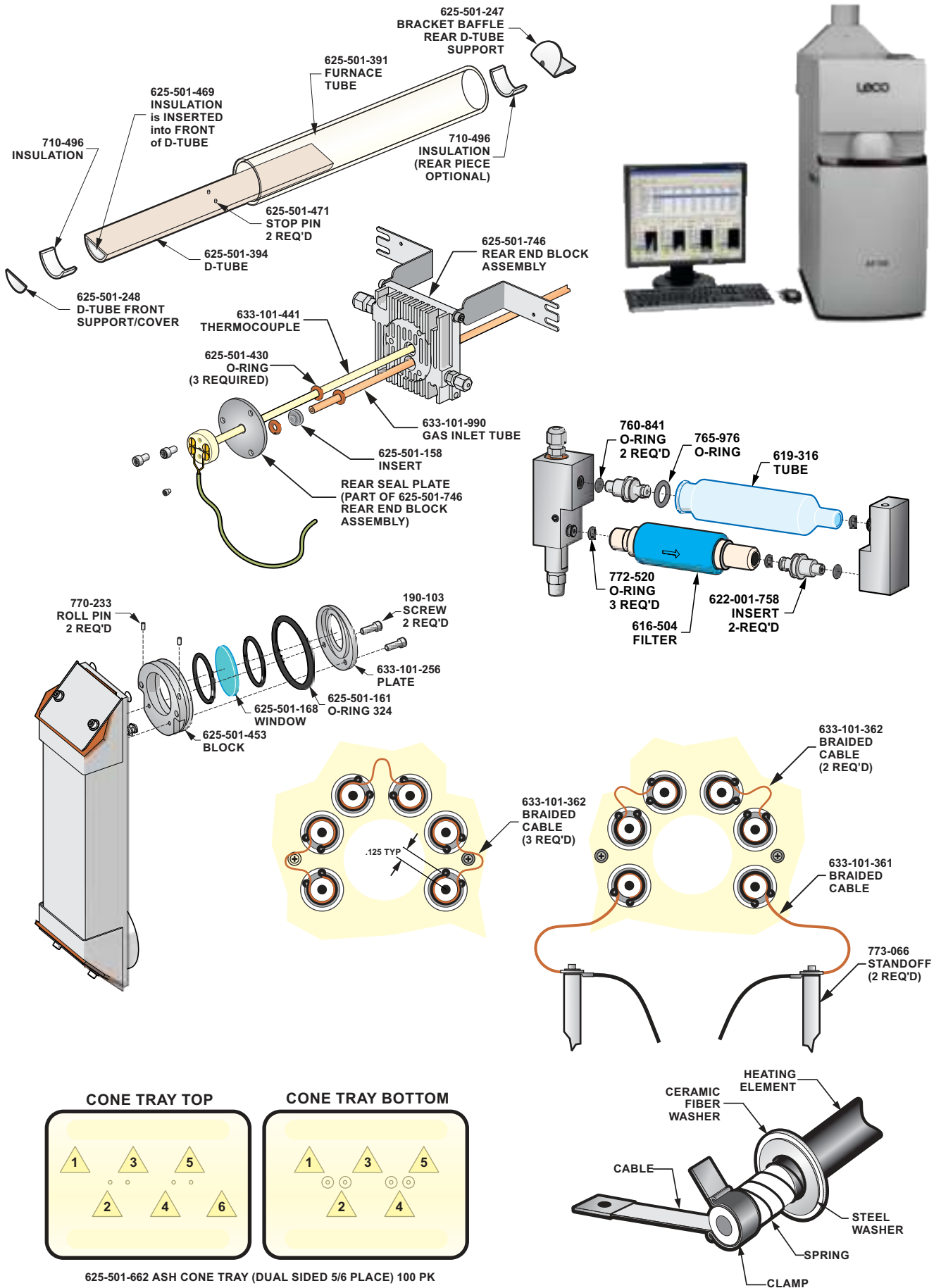
502-892	Benzoic Acid Tablets 50/pkg.
774-649	Cleaning Brush Assembly
502-682	Coal Prox Plus High Standard Ref. Matl.
774-204	Crucible 10/pkg.
502-296	Filters 100/pkg.
776-465	Air Filter
608-671	Particle Filter
776-978	Glass Scoop
502-266	Fuse Wire
502-461	Cotton Thread Fuse, 10 cm, 375/pkg.
502-460	Fixed Wire Igniter, 5/pkg.
502-462	Fuse Wire, 10 cm, 375/pkg.
621-245	Vessel Thread Igniter Kit
621-246	Vessel Wire Igniter Kit
608-778	Fuse (3.15A, 115V)
608-779	Fuse (1.6A, 230V)
608-734	Combustion Vessel Fuse Lead (Combustion Vessel Harness Assembly)
608-761-002	Bottom Outlet Pipette Tubing
608-762-004	Bottom Pipette Tubing
608-657	5 Feet Replacement Tube
608-749	Screen (Filter)
608-751	Filter Retaining Ring
501-241	Vacuum Grease (Silicone)
502-121	Wetting Agent

OPTIONS

751-350-110	Electronic Balance
608-948	Combustion Vessel Cleaning Station
621-322	Pellet Press
601-483-100	Paper (2400 sheets)
601-480	Dot Matrix Printer

REFERENCE MATERIALS AND STANDARDS

Current part numbers and values for LECO Reference Materials and Standards (209-296) can be found at <https://www.leco.com/consumables>



AF700



Consumables & Spare Parts

GENERAL OPERATING SUPPLIES

625-501-431	Door Interlock Bypass Key
761-929	Tongs
625-501-662	Ash Cone Tray (Dual sided, 5 and 6 place, 100/pkg)
776-957	Ash Cone Mold, ASTM D1857
625-501-363	Ash Cone Tray Tool
502-496	Gold Wire Calibration Standard (6 in. x 0.2 in. diameter)
501-951	Nickel Wire Calibration Standard (6 in. x 0.2 in. diameter)
502-010	Dextrin Solution
501-233-HAZ	Ceramic Alumina Adhesive
625-501-471	Test Pin Tray (Metal)
763-265	Glass Wool (0.5 lb)
616-504	Filter (0.01 micron)

REFERENCE MATERIALS AND STANDARDS

Current part numbers and values for LECO Reference Materials and Standards (209-296) can be found at <https://www.leco.com/consumables>

FURNACE AREA AND GLASSWARE

613-564	T-Clamp Expansion Tool
625-501-328	AF700 Replacement Heating Element Kit including: (2) 633-101-361 Braided Wire w/Clip (5) 633-101-362 Braided Wire (2) 625-501-149 O-Ring (12) 633-103-092 Ceramic Fiber Washer (3) 625-501-430 O-Ring (1) 625-501-464 Heating Element (3/4 inch—6 in set) (12) 625-501-470 Heating Element Clamp (3/4 inch)
625-501-361	AF700 Replacement Furnace Tube Kit including: (2) 625-501-149 O-Ring (1) 625-501-161 O-Ring (2) 625-501-382 Ring Insulation (1) 625-501-391 Mullite Furnace Tube (3) 625-501-430 O-Ring
633-103-027	AF700 High Temperature Kit including: (12) 190-728 Screws (12) 193-055 Washer (2) 625-501-149 O-Ring (12) 633-103-092 Ceramic Fiber Washer (2) 625-501-382 Ring Insulation (3) 625-501-430 O-Ring (1) 625-501-464 Heating Element Set (3/4-inch—6 in set) (2) 633-101-991 SST Braided Wire w/Clip (5) 633-101-992 SST Braided Wire (12) 194-172 Hex Nut (1) 633-101-997 Alumina Furnace Tube
625-501-394	D-Tube
633-101-990	Mullite Furnace Gas Inlet
633-101-441	Furnace Thermocouple

Ordering Information/General Terms

Ordering, Customer Assistance, and all Other Inquiries



Order Online *NOTE: Available to USA customers only.*

- Visit www.lecodirect.com to register for an account



Phone

800-292-6141 or
269-985-5496



Email

sales@leco.com
for purchase orders or
pricing information

info@leco.com
for general inquiries



Fax

269-982-8987



Mail

LECO Corporation
3000 Lakeview Avenue
St. Joseph, MI 49085

VISA, Mastercard, and American Express Accepted.



Terms and Conditions

- Terms: Net 30 days with approved credit.
- Prices shown are US dollars, F.O.B. St. Joseph, Michigan. Freight charges are prepaid and added to the invoice.
- Sales taxes will be added where applicable.
- Returns must be approved in advance; re-stocking fee may be applied. Return Material Authorization (RMA) is required for all returns. Contact LECO for RMA information.
- Disclaimer: LECO products are intended for use by professional laboratory personnel who are familiar with the handling of these materials. Our products are not for use in household, drug, medical, or cosmetic applications. The buyer and/or user assumes full responsibility for the safe handling, storage, application, and proper disposal of all products ordered from this catalog.
- Complete terms and conditions are included with quotations and invoices.
- **Prices, part numbers, and availability are subject to change without notice.**

This page intentionally blank.



3000 Lakeview Avenue | St. Joseph, MI 49085 | 800-292-6141 | Phone: 269-985-5496
info@leco.com | www.leco.com | ISO-9001:2015 Q-994 | LECO is a registered trademark of LECO Corporation.

LECO

EMPOWERING RESULTS

© 2021 LECO Corporation